



**Hornady®**

LAW ENFORCEMENT  
& MILITARY

PRODUCT CATALOG







# TABLE OF CONTENTS



**2 | TEST PROTOCOL**

**4 | CRITICAL DUTY®**

**10 | CRITICAL DEFENSE®**

**14 | 223 REM**

**16 | TAP PATROL®**

**18 | 5.56 NATO**

**20 | 300 BLACKOUT**

**23 | 6MM ARC**

**24 | 6.5 CREEDMOOR**

**26 | 308 WIN**

**28 | 300 WIN MAG**

**29 | 300 PRC**

**30 | SHOTGUN**

**32 | TRAINING™**

**34 | RIFLE / CARBINE**

**35 | HORNADY SECURITY®**

**41 | SNAPSAFE®**

**42 | GUN CLEANING &  
ACCESSORIES**

**43 | TEST BARREL BALLISTICS**



For a complete list of Hornady® patents and trademarks visit our website at [hornady.com/support/patents](https://hornady.com/support/patents).

©2023 Hornady® Law Enforcement & Military



# TEST PROTOCOL

## Bullet Velocity

All trajectories and associated velocities are from SAAMI minimum specification test barrels. An Oehler 83 model 35 P with model 55 skyscreens was used for velocity measurements. Bullet velocity was measured at a distance of 15 feet from the muzzle. Down range velocities shown in the ballistic tables are calculated with an exterior ballistics computer program.

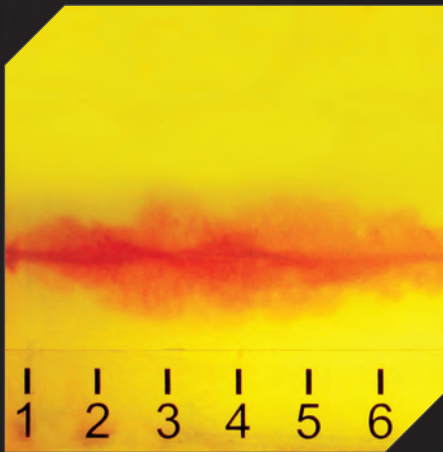
## Trajectory Tables

Trajectories are calculated using a computer program. A (-) sign indicates the trajectory of the bullet is below the line of sight. A (+) sign indicates the trajectory of the bullet is above the line of sight. All trajectories were calculated for standard atmosphere (Sea level, 59° Fahrenheit, 29.92" Hg, .07647 lb./cu ft. density).

Location:	Elevation:	Temperature:
Hornady® Manufacturing Ballistic Laboratory Grand Island, Nebraska	1,800 feet ASL	74°

All terminal testing is from actual firearms. The gelatin images represent one fired test shot. The data represents an average of five fired test shots. Individual results may vary.

## BARRIER SUBSTRATES



### Bare Gelatin

Made in accordance with standard FBI protocol (10% ordnance gelatin).



### Heavy Clothing

The gelatin block is covered with four layers of clothing: one layer of cotton t-shirt material (approximately 5.25 ounces per yard, 48 threads per inch); one layer of cotton shirt material (approximately 3.5 ounces per yard, 80 threads per inch); one layer of Malden Mills Polartec 200 fleece and one layer of cotton denim (approximately 14.4 ounces per yard, 50 threads per inch).



### Steel\*

Two pieces of 20 gauge, hot-rolled steel with a galvanized finish are set three inches apart. The clothing covered gelatin block is placed 18 inches behind the rear most piece of steel. This test event simulates the weakest part of a car door.



## 10% Ballistic Gelatin Tests

The tissue simulant utilized in FBI ballistic tests is Kind & Knox or Vyse 250-A ordnance gelatin. The mixture is 10%, by weight. Properly calibrated 10% ordnance gelatin is a reliable tissue simulant. Validation of ballistic gelatin is conducted by firing a .177" steel BB at 590 feet per second (fps), plus or minus 15 fps, into the gelatin, resulting in 8.5 centimeters (cm), plus or minus 1 cm, penetration (2.95" - 3.74"). All gelatin was stored at 40° F until just prior to testing. The gelatin was placed 10 feet from the muzzle of the test weapon (unless otherwise noted).

## Barrier Testing

Standard FBI protocol measures the penetration performance of a cartridge's projectile through a series of six tests. Measurements are taken of the depth of penetration to the nearest .25 inch (consistent penetration of 12-18"), expansion of the projectile, and retained weight of the projectile.

**Tests One through Six are shot at a distance of 10 feet from the muzzle to the front face of the gelatin block, unless otherwise noted.**

For a comprehensive report detailing all ammunition performance, please request the link to download the Hornady® Ammunition Test Report and Application Guide by going to [hornadyle.com](http://hornadyle.com).



### Wallboard\*

Two pieces of ½ inch standard gypsum board are set 3.5 inches apart. The gelatin block is placed 18 inches behind the rear most piece of gypsum. This test event simulates a typical building interior wall.



### Plywood\*

One piece of 3/4 inch "AA" fir plywood is set 18 inches in front of the gelatin block. This test event simulates the resistance of typical wooden doors or construction timbers.



### Automobile Glass\*

One piece (15" X 18") of A.S.I. 1/4 inch laminated automobile safety glass is set at an angle of 45° to the horizontal and 15° to the side, resulting in a compound angle. The gelatin block is placed 18 inches behind the glass. This test event simulates a shot taken at the driver of a car from the left front quarter of the vehicle.

\*Tests 3-6 utilize light clothing (e.g. the cotton t-shirt and dress shirt materials mentioned above), in addition to the mentioned intermediate barrier.





# CRITICAL DUTY®



HANDGUN 4

## CRITICAL DUTY®

Building on the success of Flex Tip® technology in Hornady® LEVERevolution® and Critical Defense® personal protection ammunition, the rugged FlexLock® bullet and Critical DUTY® pistol ammunition is the culmination of a decade of ballistic research and development.

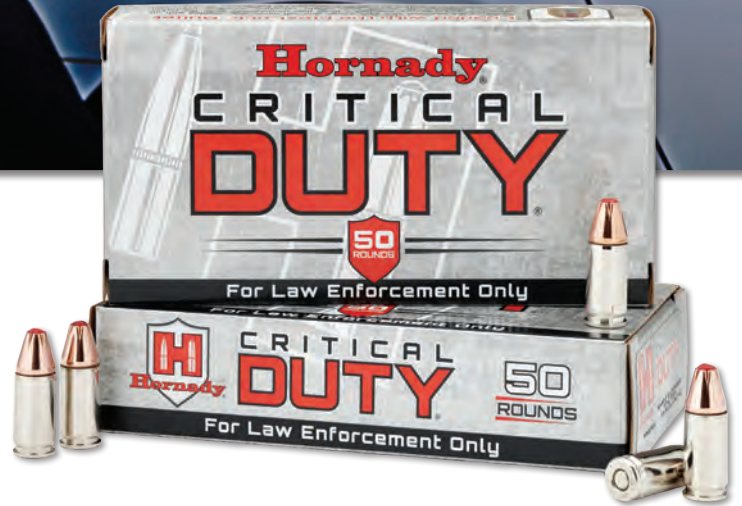
The patented Hornady® Flex Tip® design eliminates clogging and aids bullet expansion. A large mechanical jacket-to-core InterLock® band works to keep the bullet and core from separating for maximum weight retention, excellent expansion and consistent penetration and terminal performance through all FBI test barriers.

The FlexLock® is an "intelligent bullet" that reacts differently depending on the barrier it encounters, delivering "barrier blind" performance after penetrating urban barriers such as plywood, sheet metal and even auto glass.

Bright nickel plated cases eliminate cartridge case tarnish. The highly visible silver nickel simplifies chamber checks in reduced light. Additionally, waterproofing sealant has been applied to the primer pocket and case mouth to prevent moisture intrusion. All Critical DUTY® ammunition is loaded with low flash propellant to help preserve night vision in low-light firing.

For the ultimate in tactical terminal ballistic performance through all FBI established urban barriers, choose Critical DUTY® ammunition.

*Hornady currently has an Indefinite Delivery/Indefinite Quantity (IDIQ) contract with the FBI to provide Critical Duty, Training, and Frangible ammunition.*



U.S. Patent Nos. 8,161,885; 8,413,587; 9,121,677



To learn more about Critical Duty®, scan the QR code.





### 1. FLEXLOCK® BULLET

Incorporates two revolutionary Hornady® features: the patented Flex Tip® that initiates consistent expansion while preventing clogging, and the heavy duty InterLock® band that locks the jacket and core together.

### 2. CANNELURED BULLET WITH CRIMPED CASE

Cannelured bullet with crimped case reduces bullet setback during feeding.

### 3. INTERLOCK® BAND

This band works to keep the jacket and core from separating for maximum weight retention and proven terminal performance through all FBI test barriers.

### 4. BULLET CORE

The bullet core is made of high-antimony lead making it extremely tough, delivering controlled expansion for unparalleled terminal performance consistency through all FBI test barriers. It's also more economical than bonded bullets.

### 5. NICKEL-PLATED CASES

Nickel-plated cases resist corrosion and greatly enhance low-light chamber checks.

### 6. SEALED PRIMER AND CASE MOUTH

Waterproofing sealant has been applied to the primer pocket and case mouth to prevent moisture intrusion.

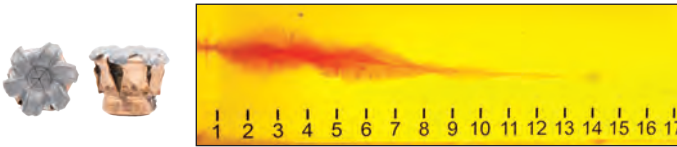


The Federal Bureau of Investigation (FBI) completed an extensive evaluation process and selected Hornady Critical Duty® as its source for 9mm +P and 40 S&W pistol ammunition.

*Critical Duty® handgun ammunition is built to meet the needs and requirements of law enforcement and tactical professionals by delivering superior barrier penetration and subsequent terminal performance defined by the FBI Protocol.*

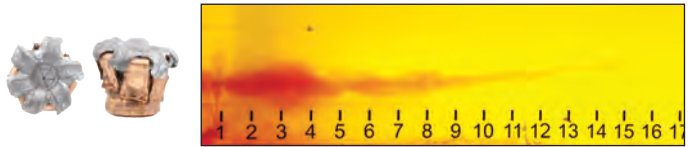
## 9MM LUGER+P 124 gr. FlexLock®

3.1" BBL | SIG P365 | NO. 90215



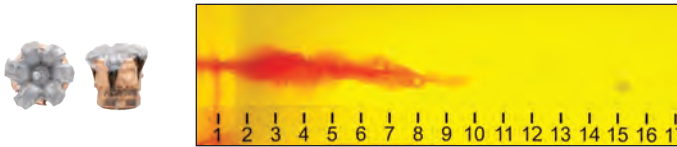
### BARE GELATIN

Penetration	Expanded Diameter	Retained Weight	Velocity (FPS)
14.5"	0.54"	100%	1079



### WALLBOARD

Penetration	Expanded Diameter	Retained Weight	Velocity (FPS)
15.25"	0.55"	100%	1081



### HEAVY CLOTHING

Penetration	Expanded Diameter	Retained Weight	Velocity (FPS)
15.5"	0.51"	100%	1093



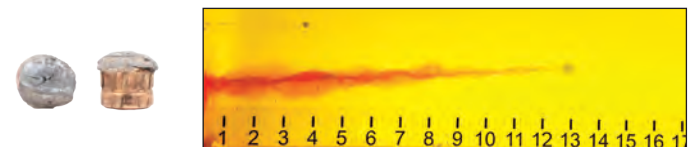
### PLYWOOD

Penetration	Expanded Diameter	Retained Weight	Velocity (FPS)
14.25"	0.53"	100%	1087



### STEEL

Penetration	Expanded Diameter	Retained Weight	Velocity (FPS)
12.25"	0.53"	97%	1083



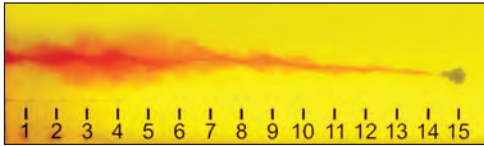
### AUTO GLASS

Penetration	Expanded Diameter	Retained Weight	Velocity (FPS)
13.25"	0.41"	72%	1081



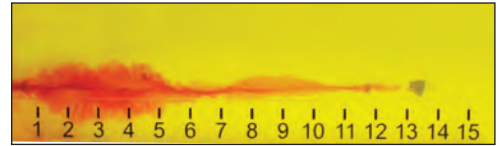
# 9MM LUGER 135 gr. FlexLock®

4.5" BBL | GLOCK 17 | NO. 90235



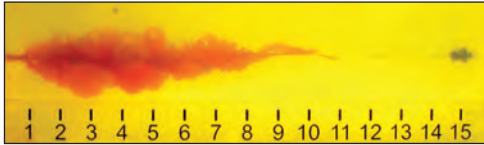
## BARE GELATIN

Penetration	Expanded Diameter	Retained Weight	Velocity (FPS)
15.25"	0.56"	100%	1056



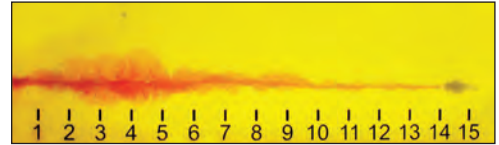
## WALLBOARD

Penetration	Expanded Diameter	Retained Weight	Velocity (FPS)
13.5"	0.58"	100%	1065



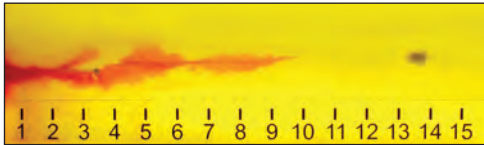
## HEAVY CLOTHING

Penetration	Expanded Diameter	Retained Weight	Velocity (FPS)
15.5"	0.50"	100%	1066



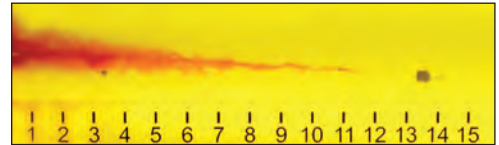
## PLYWOOD

Penetration	Expanded Diameter	Retained Weight	Velocity (FPS)
15.0"	0.51"	100%	1070



## STEEL

Penetration	Expanded Diameter	Retained Weight	Velocity (FPS)
13.75"	0.49"	99%	1067



## AUTO GLASS

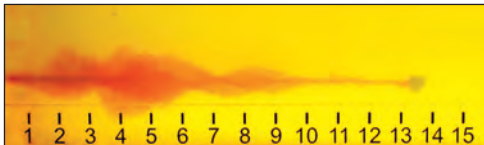
Penetration	Expanded Diameter	Retained Weight	Velocity (FPS)
13.75"	0.41"	67%	1061

# 9MM LUGER +P 135 gr. FlexLock®

4.5" BBL | Glock 17 | No. 90225

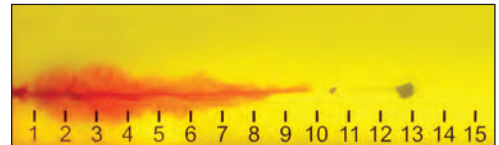


Tested and selected by the FBI.



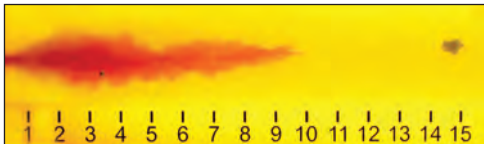
## BARE GELATIN

Penetration	Expanded Diameter	Retained Weight	Velocity (FPS)
14.0"	0.60"	100%	1162



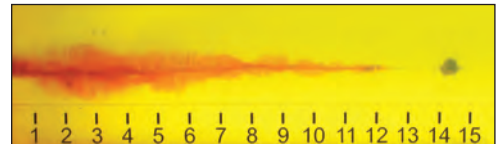
## WALLBOARD

Penetration	Expanded Diameter	Retained Weight	Velocity (FPS)
13.0"	0.62"	100%	1159



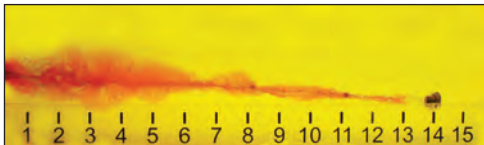
## HEAVY CLOTHING

Penetration	Expanded Diameter	Retained Weight	Velocity (FPS)
15.0"	0.55"	100%	1164



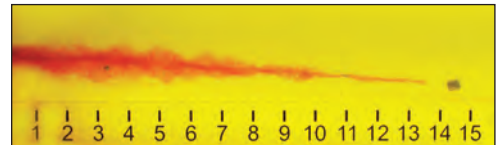
## PLYWOOD

Penetration	Expanded Diameter	Retained Weight	Velocity (FPS)
14.75"	0.57"	100%	1167



## STEEL

Penetration	Expanded Diameter	Retained Weight	Velocity (FPS)
14.5"	0.53"	97%	1171



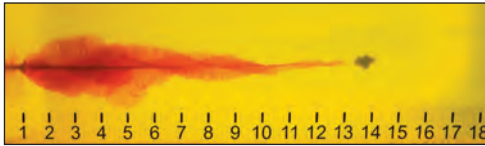
## AUTO GLASS

Penetration	Expanded Diameter	Retained Weight	Velocity (FPS)
14.75"	0.42"	69%	1157



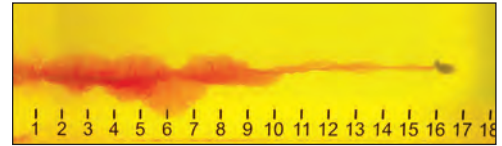
## 357 Sig 135 gr. FlexLock®

4.5" BBL | Glock 31 | No. 91295



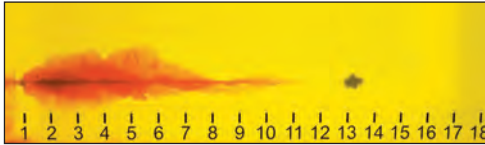
### BARE GELATIN

Penetration	Expanded Diameter	Retained Weight	Velocity (FPS)
14.0"	0.58"	99%	1221



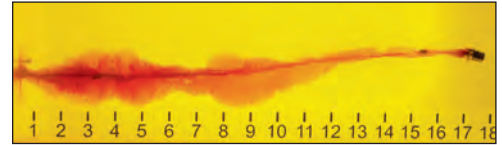
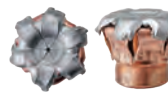
### WALLBOARD

Penetration	Expanded Diameter	Retained Weight	Velocity (FPS)
16.5"	0.42"	100%	1226



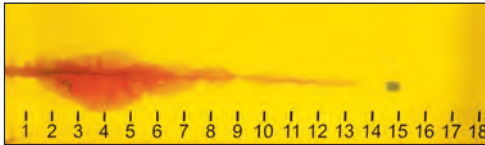
### HEAVY CLOTHING

Penetration	Expanded Diameter	Retained Weight	Velocity (FPS)
13.5"	0.56"	99%	1218



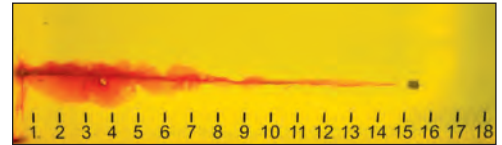
### PLYWOOD

Penetration	Expanded Diameter	Retained Weight	Velocity (FPS)
17.75"	0.53"	100%	1231



### STEEL

Penetration	Expanded Diameter	Retained Weight	Velocity (FPS)
15.0"	0.51"	95%	1227

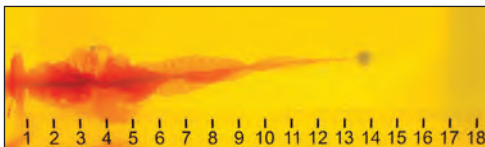


### AUTO GLASS

Penetration	Expanded Diameter	Retained Weight	Velocity (FPS)
15.5"	0.49"	77%	1230

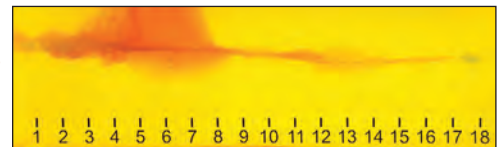
## 357 Mag 135 gr. FlexLock®

4.2" BBL | RUGER GP-100 | NO. 90515



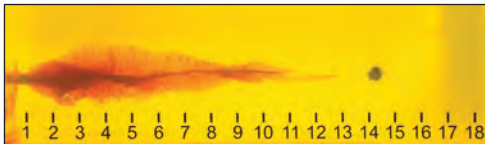
### BARE GELATIN

Penetration	Expanded Diameter	Retained Weight	Velocity (FPS)
14.0"	0.58"	99%	1272



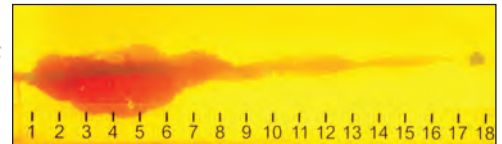
### WALLBOARD

Penetration	Expanded Diameter	Retained Weight	Velocity (FPS)
18.5"	0.44"	100%	1284



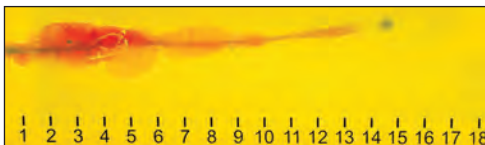
### HEAVY CLOTHING

Penetration	Expanded Diameter	Retained Weight	Velocity (FPS)
14.5"	0.57"	99%	1287



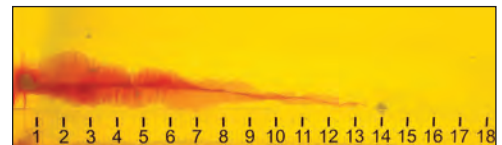
### PLYWOOD

Penetration	Expanded Diameter	Retained Weight	Velocity (FPS)
18.0"	0.54"	95%	1280



### STEEL

Penetration	Expanded Diameter	Retained Weight	Velocity (FPS)
14.75"	0.50"	98%	1266



### AUTO GLASS

Penetration	Expanded Diameter	Retained Weight	Velocity (FPS)
14.0"	0.46"	73%	1276

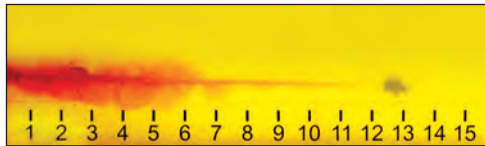


# 40 S&W 175 gr. FlexLock®

4.5" BBL | GLOCK 22 | NO. 91375

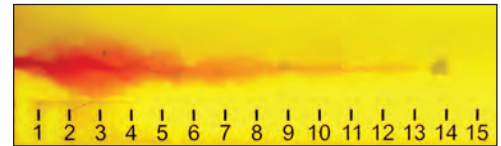


Tested and selected by the FBI.



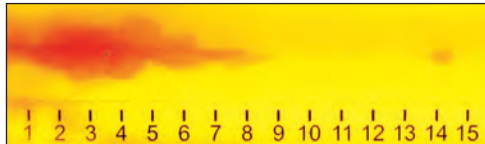
## BARE GELATIN

Penetration	Expanded Diameter	Retained Weight	Velocity (FPS)
13.5"	0.57"	99%	1067



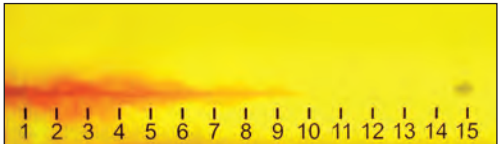
## WALLBOARD

Penetration	Expanded Diameter	Retained Weight	Velocity (FPS)
14.0"	0.63"	99%	1059



## HEAVY CLOTHING

Penetration	Expanded Diameter	Retained Weight	Velocity (FPS)
14.5"	0.54"	99%	1062



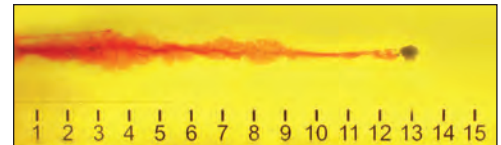
## PLYWOOD

Penetration	Expanded Diameter	Retained Weight	Velocity (FPS)
15.0"	0.52"	99%	1063



## STEEL

Penetration	Expanded Diameter	Retained Weight	Velocity (FPS)
13.0"	0.57"	98%	1066

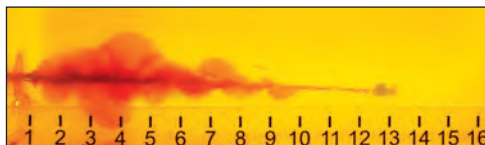


## AUTO GLASS

Penetration	Expanded Diameter	Retained Weight	Velocity (FPS)
13.0"	0.61"	79%	1063

# 10MM AUTO 175 gr. FlexLock®

4.6" BBL | GLOCK 20 | NO. 91255



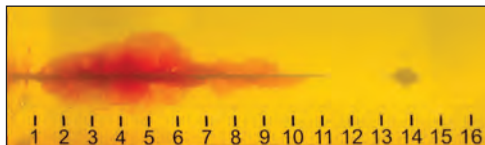
## BARE GELATIN

Penetration	Expanded Diameter	Retained Weight	Velocity (FPS)
13.25"	0.66"	99%	1134



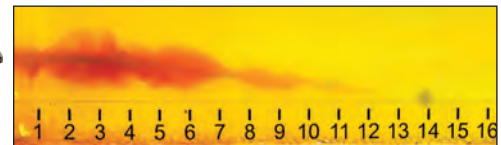
## WALLBOARD

Penetration	Expanded Diameter	Retained Weight	Velocity (FPS)
13.0"	0.67"	96%	1139



## HEAVY CLOTHING

Penetration	Expanded Diameter	Retained Weight	Velocity (FPS)
14.5"	0.63"	99%	1121



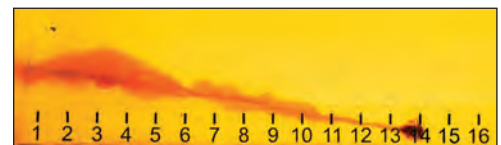
## PLYWOOD

Penetration	Expanded Diameter	Retained Weight	Velocity (FPS)
14.0"	0.68"	97%	1128



## STEEL

Penetration	Expanded Diameter	Retained Weight	Velocity (FPS)
15.75"	0.56"	99%	1126



## AUTO GLASS

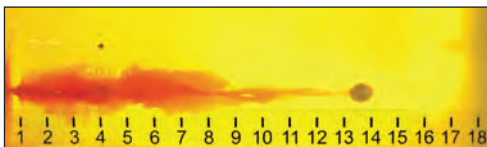
Penetration	Expanded Diameter	Retained Weight	Velocity (FPS)
14.0"	0.55"	80%	1119

HANDGUN 8



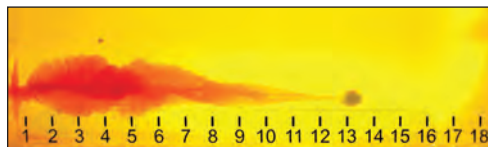


**45 AUTO+P 220 gr. FlexLock®**  
5" BBL | GLOCK 21 | NO. 90925



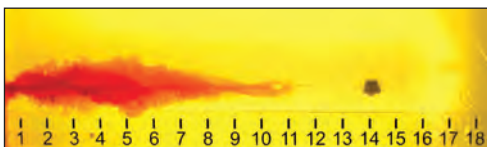
**BARE GELATIN**

Penetration	Expanded Diameter	Retained Weight	Velocity (FPS)
14.0"	0.71"	99%	969



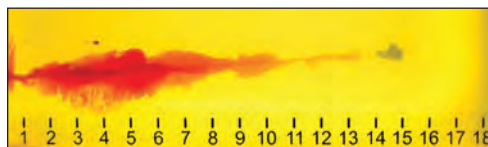
**WALLBOARD**

Penetration	Expanded Diameter	Retained Weight	Velocity (FPS)
13.5"	0.70"	99%	979



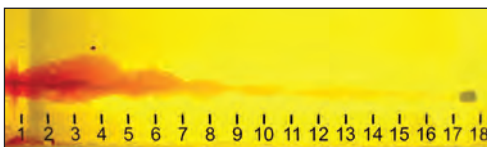
**HEAVY CLOTHING**

Penetration	Expanded Diameter	Retained Weight	Velocity (FPS)
14.5"	0.69"	99%	976



**PLYWOOD**

Penetration	Expanded Diameter	Retained Weight	Velocity (FPS)
15.0"	0.66"	99%	978



**STEEL**

Penetration	Expanded Diameter	Retained Weight	Velocity (FPS)
17.75"	0.54"	99%	973



**AUTO GLASS**

Penetration	Expanded Diameter	Retained Weight	Velocity (FPS)
13.75"	0.53"	75%	972





# CRITICAL DEFENSE®

HANDGUN | 10



## CRITICAL DEFENSE®

Critical Defense® ammunition is ideal for executive protection, undercover operations, close quarters situations, or for use in backup weapons or off-duty carry.

Personal defense ammunition is redefined with Hornady® Critical Defense® ammunition. You may have never thought about the effects of fabric and clothing on the performance of ammo. But clothing — especially heavy clothing — has a lot to do with how the bullet expands upon impact. Conventional hollow point bullets often experience tip clogging as the bullet passes through light and heavy clothing, which diminishes expansion and causes unreliable bullet performance.

Hornady® Critical Defense® ammo eliminates clogging with the use of the patented FTX® (Flex Tip eXpanding) bullet. Upon entering soft tissue, the tip swells and imparts equal pressure across the entire circumference of the bullet cavity. The result is unrivaled bullet expansion and performance.



U.S. Patent Nos.  
8,161,885  
8,413,587



To learn more about Critical Defense®, scan the QR code.





### 1. FTX® Bullet Technology

The patented FTX® bullet will expand reliably.

### 2. Optimized Propellants

Optimized propellants burn quickly, reduce recoil and limit muzzle flash to protect night vision.

### 3. Nickel-plated Case

Nickel-plated cases resist corrosion and greatly enhance low-light chamber checks.



**OURS**



Flex Tip® technology guarantees reliable performance.

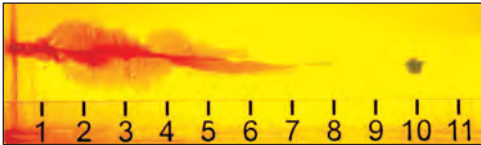
**THEIRS**



Conventional hollow point bullets perform unreliably when encountering heavy fabric or layers of clothing.

All Critical Defense® ballistic gelatin shots were fired from 10 feet.

**380 AUTO 90 gr. FTX®**  
2.75" BBL RUGER LCP | No. 90080



#### HEAVY CLOTHING

Penetration	Expanded Diameter	Retained Weight	Velocity (FPS)
10.25"	0.51"	98%	1000

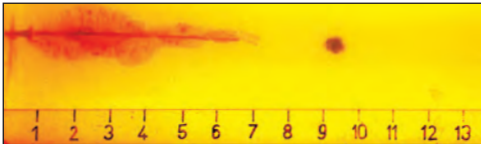
**9MM LUGER 115 gr. FTX®**  
3" BBL | Kahr MK9 | No. 90250



#### HEAVY CLOTHING

Penetration	Expanded Diameter	Retained Weight	Velocity (FPS)
11.25"	0.55"	100%	1140

**9x18 MAKAROV 95 gr. FTX®**  
3.75" BBL MAKAROV M | No. 91000



#### HEAVY CLOTHING

Penetration	Expanded Diameter	Retained Weight	Velocity (FPS)
9.75"	0.57"	100%	1000

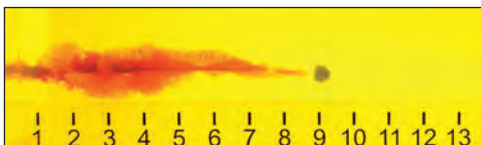
**38 SPL 90 gr. FTX®**  
**CRITICAL DEFENSE® LITE**  
1 7/8" BBL | Smith & Wesson 637 | No. 90300



#### HEAVY CLOTHING

Penetration	Expanded Diameter	Retained Weight	Velocity (FPS)
8.25"	0.54"	98%	1010

**9MM LUGER 100 gr. FTX®**  
**CRITICAL DEFENSE® LITE**  
3" BBL | Kahr MK9 | No. 90240



#### HEAVY CLOTHING

Penetration	Expanded Diameter	Retained Weight	Velocity (FPS)
9.25"	0.57"	99%	1125

**38 SPL 110 gr. FTX®**  
1 7/8" BBL | Smith & Wesson 637 | No. 90310



#### HEAVY CLOTHING

Penetration	Expanded Diameter	Retained Weight	Velocity (FPS)
13.0"	0.50"	100%	1010

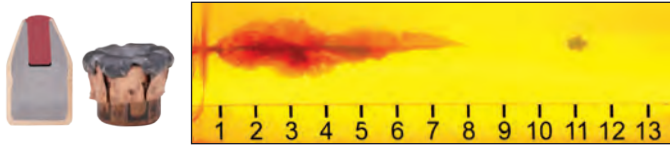




# CRITICAL DEFENSE®

## 38 SPL+P 110 gr. FTX®

1 7/8" BBL | Smith & Wesson 637 | No. 90311

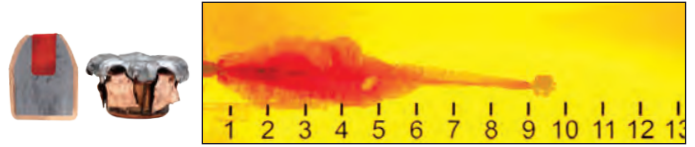


### HEAVY CLOTHING

Penetration	Expanded Diameter	Retained Weight	Velocity (FPS)
11.25"	0.54"	99%	1090

## 44 SPL 165 gr. FTX®

2 1/2" BBL | Smith & Wesson 329 PD | No. 90700

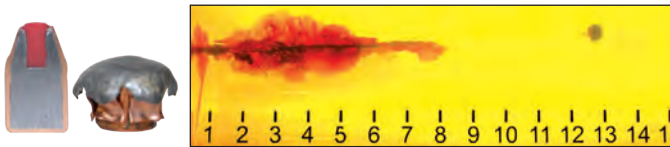


### HEAVY CLOTHING

Penetration	Expanded Diameter	Retained Weight	Velocity (FPS)
9.75"	0.70"	99%	900

## 357 MAG 125 gr. FTX®

3" BBL | Smith & Wesson 686 | No. 90500

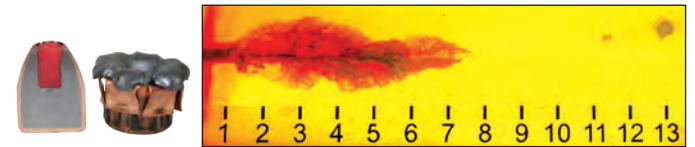


### HEAVY CLOTHING

Penetration	Expanded Diameter	Retained Weight	Velocity (FPS)
13.0"	0.61"	100%	1500

## 45 AUTO 185 gr. FTX®

3" BBL | Springfield EMP | No. 90900

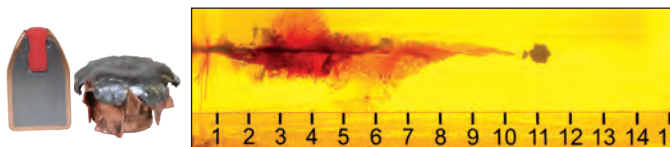


### HEAVY CLOTHING

Penetration	Expanded Diameter	Retained Weight	Velocity (FPS)
13.75"	0.66"	99%	1000

## 40 S&W 165 gr. FTX®

3" BBL | Springfield XD 40C | No. 91340

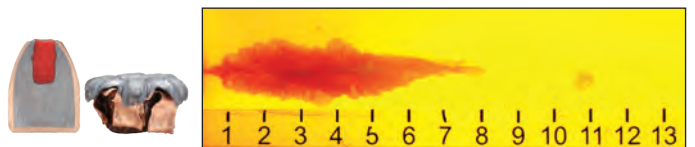


### HEAVY CLOTHING

Penetration	Expanded Diameter	Retained Weight	Velocity (FPS)
11.5"	0.68"	100%	1045

## 45 COLT 185 gr. FTX®

3" BBL | Taurus Judge | No. 92790



### HEAVY CLOTHING

Penetration	Expanded Diameter	Retained Weight	Velocity (FPS)
11.25"	0.74"	99%	910

All Critical Defense® ballistic gelatin shots were fired from 10 feet.

12  
HANDGUN



### RAPiD® Safe

- Fast access • Touch-free entry
- Child-resistant design



Learn more about this revolutionary concept in firearm protection on pages 35-39.

# The difference between Critical Defense® & Critical DUTY®



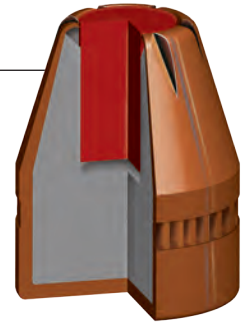
## CRITICAL DEFENSE®

### Critical Defense® = Backup Weapons/Off-Duty Carry

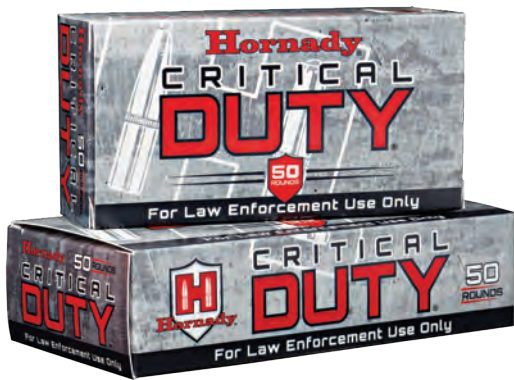
Critical Defense® handgun ammunition is ideal for backup weapons, off-duty carry or for those serving in executive protection, undercover operations, or any dedicated close quarters situation.

Critical Defense® provides controlled expansion while reducing the potential of over penetration. The patented FTX® bullet and associated Flex Tip® technology used in Critical Defense® ammunition eliminates the clogging and inconsistent expansion and penetration that often plagues hollow point bullets.

All Critical Defense® ammunition is loaded in nickel-plated cases for improved feeding and increased visibility in low-light situations. Critical Defense® is unaffected by thick, heavy clothing (including denim and leather) and delivers superior controlled expansion with deep wound cavities over a wide range of velocities. Premium low-flash propellants have been specifically tailored for short-barreled handguns to deliver proven performance.



U.S. Patent Nos.  
8,161,885  
8,413,587



## CRITICAL DUTY®

### Critical DUTY® = On-Duty/ Patrol/Tactical

Critical DUTY® handgun ammunition is built to meet the diverse on-duty requirements of law enforcement and tactical professionals. Critical DUTY® ammunition delivers superior barrier penetration and subsequent terminal performance, while still minimizing the liability of over-penetration.

The FlexLock® bullets loaded in all Critical DUTY® offerings are rugged, heavy-jacketed bullets that deliver “barrier blind” performance when shot through common urban barriers\* (bare gelatin, auto glass, sheet metal, plywood, drywall, and heavy clothing). In addition, Critical DUTY® loads are designed to work in ALL handguns. However, these loads deliver optimized performance through the FBI Protocol test.

All Critical DUTY® ammunition is loaded in nickel plated cases for improved feeding and increased visibility in low-light situations and features waterproof sealant around the primer and the case mouth to provide superior performance no matter your environment.

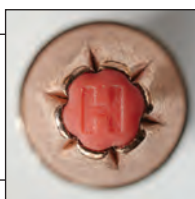
\*As defined by the “FBI Protocol” handgun ammunition test.



U.S. Patent Nos.  
8,161,885  
8,413,587  
9,121,677



Critical DUTY® ammo features waterproof sealant around the primer.



Critical DUTY® ammo features an “H” on the tip.

**Critical DUTY® ammo is packaged in 50-count boxes for Law Enforcement.**





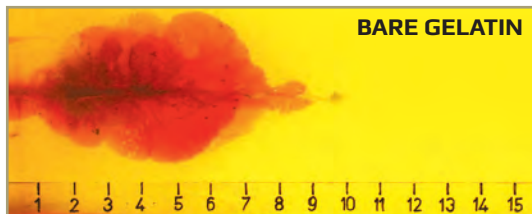
# 223 REM

14  
RIFLE



## 223 REM

Hornady® 223 Rem TAP® loads are a unique offering to law enforcement professionals that combine reliable functioning with consistent performance, low muzzle signature, and exceptional accuracy in cannellured and crimped 53, 55, 60 and 62 gr. bullets, and a 75 gr. load offering match accuracy. This ammunition features clean burning propellants and enhanced terminal performance. These highly effective bullets will penetrate soft body armor making them an excellent choice for patrol rifle programs and SWAT teams.



BARE GELATIN

**Bullet:** 55 gr. TAP Urban®  
**B.C.:** .255 **S.D.:** .157  
**Muzzle Velocity:** 2981 fps  
**Barrel:** 16"  
**Twist Rate:** 1:9"  
**Total Penetration:** 10"  
**Max. Cavity:** 4.5"  
**Depth to Max. Cav.:** 5"  
**Entry:** 0.5"  
**Retained Weight:** 24.1 gr.

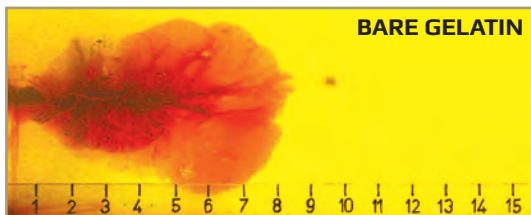


## 55 gr. TAP URBAN® ITEM #83276

**APPLICATION:** ENTRY

The Hornady® 223 Rem 55 gr. TAP Urban® is the preferred choice for use in SBRs, carbines, and rifles when the probability for barrier penetration is low. Rapid expansion provides dramatic wound cavities, massive fragmentation, and prevents over penetration on non-barrier engagements. These factors make this bullet a great choice when collateral risk is high.

24" SAAMI 223 Remington Test Barrel 1:12"	muzzle	100 yds	200 yds	300 yds	400 yds	500 yds
Velocity (fps)	3220	2837	2485	2159	1859	1589
Energy (ft lbs)	1266	983	754	569	422	308
Trajectory (inches)	-1.5	0.0	-2.9	-11.4	-27.5	-53.7



**Bullet:** 60 gr. TAP Urban®  
**B.C.:** .265 **S.D.:** .171  
**Muzzle Velocity:** 2892 fps  
**Barrel:** 16"  
**Twist Rate:** 1:9"  
**Total Penetration:** 9.75"  
**Max. Cavity:** 5.25"  
**Depth to Max. Cav.:** 6.25"  
**Entry:** 0"  
**Retained Weight:** 20.2 gr.

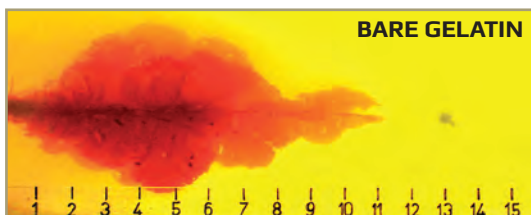


## 60 gr. TAP URBAN® ITEM #83286

**APPLICATION: ENTRY**

The Hornady® 223 Rem 60 gr. TAP Urban® offers high velocity and performance similar to that of other polymer tipped Hornady® 223 bullets. The 60 gr. bullet offers similar retained weight and penetration to the 55 gr. TAP Urban®, and is the heaviest polymer tipped bullet acceptable for 1:12" twist weapons. The heavier 60 gr. bullet transfers more energy to the target for enhanced terminal performance.

24" SAAMI 223 Remington Test Barrel 1:12"	muzzle	100 yds	200 yds	300 yds	400 yds	500 yds
Velocity (fps)	3110	2749	2417	2108	1823	1567
Energy (ft lbs)	1289	1007	778	592	443	327
Trajectory (inches)	-1.5	0	-3.1	-12.3	-29.3	-56.8



**Bullet:** 62 gr. TAP® Barrier™  
**B.C.:** .264 **S.D.:** .176  
**Muzzle Velocity:** 2840 fps  
**Barrel:** 16"  
**Twist Rate:** 1:9"  
**Total Penetration:** 13.75"  
**Max. Cavity:** 4.5"  
**Depth to Max. Cav.:** 4.75"  
**Entry:** 0.25"  
**Retained Weight:** 43.6 gr.

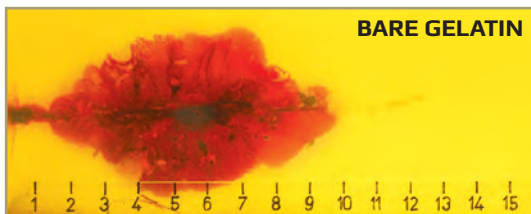


## 62 gr. TAP® BARRIER™ ITEM #83285

**APPLICATION: PATROL/DUTY**

TAP® Barrier™ turns cover into concealment. Hornady® originally developed this ammunition to meet the requirement for a high-speed, barrier penetrating bullet that could be used for nuclear power plant security. The design of the TAP® Barrier™ round allows the projectile to maintain its structural integrity while punching through barriers, yet still initiates expansion in soft tissue. For patrol carbine programs or any tactical situation where the need is for barrier penetration and terminal soft tissue performance, Hornady® TAP® Barrier™ ammunition is the ideal choice.

24" SAAMI 223 Remington Test Barrel 1:12"	muzzle	100 yds	200 yds	300 yds	400 yds	500 yds
Velocity (fps)	3050	2699	2375	2073	1796	1546
Energy (ft lbs)	1239	971	751	573	430	319
Trajectory (inches)	-1.5	0	-3.3	-12.8	-30.5	-59.0



**Bullet:** 75 gr. BTHP TAP®  
**B.C.:** .395 **S.D.:** .214  
**Muzzle Velocity:** 2542 fps  
**Barrel:** 16"  
**Twist Rate:** 1:7"  
**Total Penetration:** 12.5"  
**Max. Cavity:** 5.25"  
**Depth to Max. Cav.:** 5"  
**Entry:** 1"  
**Retained Weight:** 27.0 gr.



## 75 gr. BTHP TAP® ITEM #80265

**APPLICATION: PRECISION RIFLE**

This match accurate load is our heavy TAP® offering in 223 Rem. This load is suitable for a short barreled rifle that has either a 223 Rem or 5.56 NATO chamber. The 75 gr. bullet offers deeper penetration than the 55 gr. and 60 gr. TAP Urban® bullets. The 75 gr. BTHP penetrates with minimal deflection and provides rapid fragmentation, thus delivering more energy to the target. This bullet generates very large and consistent wound cavities, serving as an ideal choice for 223 Rem precision rifle applications.

24" SAAMI 223 Remington Test Barrel 1:12"	muzzle	100 yds	200 yds	300 yds	400 yds	500 yds
Velocity (fps)	2785	2557	2340	2134	1939	1755
Energy (ft lbs)	1292	1089	912	759	626	513
Trajectory (inches)	-1.5	0	-3.8	-14.1	-31.9	59.1





# TAP PATROL®

16  
RIFLE



## TAP PATROL®

TAP Patrol® is specifically designed to provide consistent and reliable performance through the FBI protocol when fired through 14.5" – 16" barreled 1:7" – 1:9" twist patrol rifles. The lead free bullet features a flat polymer tip, which allows it to provide "barrier blind" performance ensuring consistent penetration depths. The flat tip design ensures the bullet will not plug with material from the barriers and ensures feeding through the wide variety of patrol rifle platforms. TAP Patrol® ammunition is loaded with temperature stable, low flash propellant designed to work when you do.

**APPLICATION: ENTRY, PATROL/DUTY**



Available in 223 Rem and 5.56 NATO.  
See page 43-44 for ballistics.



**BARE GELATIN**

Penetration	Expanded Diameter	Retained Weight	Velocity (FPS)
16.0"	0.50"	98%	3010



**WALLBOARD**

Penetration	Expanded Diameter	Retained Weight	Velocity (FPS)
16.0"	0.48"	91%	3030



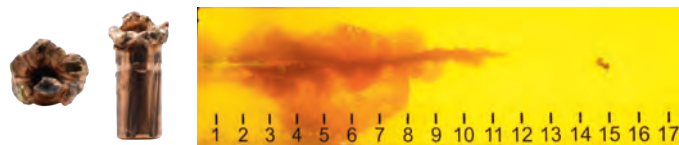
**HEAVY CLOTHING**

Penetration	Expanded Diameter	Retained Weight	Velocity (FPS)
16.5"	0.46"	89%	3045



**PLYWOOD**

Penetration	Expanded Diameter	Retained Weight	Velocity (FPS)
16.0"	0.28"	40%	3014



**STEEL**

Penetration	Expanded Diameter	Retained Weight	Velocity (FPS)
15.0"	0.33"	92%	3027



**AUTO GLASS**

Penetration	Expanded Diameter	Retained Weight	Velocity (FPS)
13.25"	0.42"	72%	3025



**BARE GELATIN**

Penetration	Expanded Diameter	Retained Weight	Velocity (FPS)
16.0"	0.48"	97%	3169



**WALLBOARD**

Penetration	Expanded Diameter	Retained Weight	Velocity (FPS)
13.5"	0.42"	44%	3161



**HEAVY CLOTHING**

Penetration	Expanded Diameter	Retained Weight	Velocity (FPS)
16.25"	0.48"	96%	3136



**PLYWOOD**

Penetration	Expanded Diameter	Retained Weight	Velocity (FPS)
14.0"	0.31"	37%	3170



**STEEL**

Penetration	Expanded Diameter	Retained Weight	Velocity (FPS)
15.25"	0.36"	94%	3143



**AUTO GLASS**

Penetration	Expanded Diameter	Retained Weight	Velocity (FPS)
15.0"	0.36"	50%	3156





# 5.56 NATO

18  
RIFLE

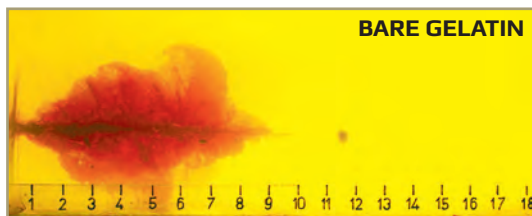


## 5.56 NATO

Many rifles chambered in 5.56 NATO are not realizing their full potential because departments are shooting 223 Rem ammo. To get all the performance the 5.56 NATO can deliver, the Hornady® 5.56 rounds are tailored to maximize performance.

Your 5.56 NATO chambered rifle was designed to take advantage of the higher pressure of the 5.56 NATO cartridge — higher pressure translates to increased velocity, higher energy and harder-hitting performance.

**CAUTION:** Firing 5.56 NATO ammunition in 223 Remington chambers will produce a dramatic rise in pressure which increases stress on the weapon, risking wear, permanent damage and/or injury. Please see our Application Guide for full details.



BARE GELATIN

Bullet: 62 gr. TAP® Barrier™  
B.C.: .264 S.D.: .176  
Muzzle Velocity: 2910 fps  
Barrel: 16"  
Twist Rate: 1:9"  
Total Penetration: 11.75"  
Max. Cavity: 5.5"  
Depth to Max. Cav.: 4.75"  
Entry: 0.75"  
Retained Weight: 45.1 gr.



## 62 gr. TAP® BARRIER™ ITEM #8125C (50ct)

APPLICATION: PATROL/DUTY

TAP® Barrier™ turns cover into concealment. Hornady® originally developed this ammunition to meet the requirement for a high-speed, barrier penetrating bullet that could be used for nuclear power plant security. The design of the TAP® Barrier™ round allows the projectile to maintain its structural integrity while punching through barriers, yet still initiates expansion in soft tissue. For patrol carbine programs or any tactical situation where the need is for barrier penetration and terminal soft tissue performance, Hornady® TAP® Barrier™ ammunition is the ideal choice.

20" 5.56×45mm NATO Test Barrel 1:7"	muzzle	100 yds	200 yds	300 yds	400 yds	500 yds
Velocity (fps)	3085	2725	2393	2085	1801	1546
Energy (ft lbs)	1310	1022	788	598	446	329
Trajectory (inches)	-1.5	0	-3.2	-12.6	-30.0	-58.2



**Bullet:** 70 gr. CX™ TAP® Barrier™  
**B.C.:** .350 **S.D.:** .199  
**Muzzle Velocity:** 2652 fps  
**Barrel:** 16"  
**Twist Rate:** 1:7"  
**Total Penetration:** 18"  
**Max. Cavity:** 4.0"  
**Depth to Max. Cav.:** 4.5"  
**Entry:** 0.5"  
**Retained Weight:** 67.6 gr.



## 70 gr. CX™ TAP® BARRIER™ ITEM #81265

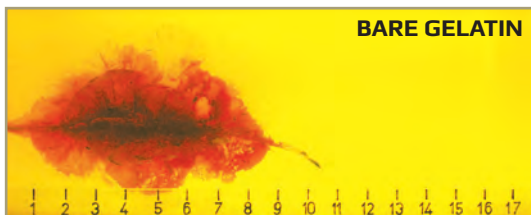
**APPLICATION:** PATROL/DUTY | **Meets FBI Protocol**

**LEAD FREE**

TAP® Barrier™ turns cover into concealment. The 5.56 NATO 70 gr. CX™ Barrier™ round is designed to meet the requirements of the FBI Protocol. The 70 gr. CX™ is a monolithic solid bullet constructed entirely from a premium copper alloy that will deliver high weight retention and deep penetration. This bullet is well suited for guns with faster twist rates and is extremely reliable for patrol carbine use or any other situation that may involve vehicles or barricades.

**(For use in 1:7" twist SBRs, carbines and rifles or 1:8" twist carbines and rifles.)**

20" 5.56x45mm NATO Test Barrel 1:7"	muzzle	100 yds	200 yds	300 yds	400 yds	500 yds
Velocity (fps)	2900	2637	2389	2154	1934	1728
Energy (ft lbs)	1307	1081	887	721	581	464
Trajectory (inches)	-1.5	0	-3.5	-13.1	-30.3	-56.8



**Bullet:** 75 gr. BTHP T2 TAP®  
**B.C.:** .355 **S.D.:** .214  
**Muzzle Velocity:** 2747 fps  
**Barrel:** 16"  
**Twist Rate:** 1:9"  
**Total Penetration:** 10.5"  
**Max. Cavity:** 5.5"  
**Depth to Max. Cav.:** 5.5"  
**Entry:** 0.75"  
**Retained Weight:** 31.5 gr.

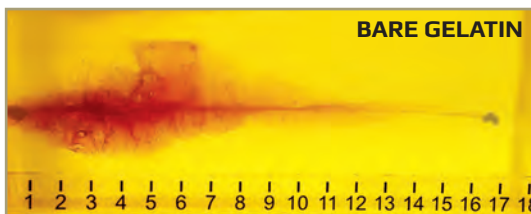


## 75 gr. BTHP T2 TAP® ITEM #8126N

**APPLICATION:** PRECISION RIFLE

The T2 bullet profile is specifically designed to optimize function and feeding in M16/M4 variant guns. The cartridge's propellant technology is custom designed to enhance weapon operation, and delivers phenomenal temperature stability. The 75 gr. BTHP T2 bullet is designed to deliver rapid incapacitation upon impact.

20" 5.56x45mm NATO Test Barrel 1:7"	muzzle	100 yds	200 yds	300 yds	400 yds	500 yds
Velocity (fps)	2885	2626	2382	2151	1934	1731
Energy (ft lbs)	1386	1149	945	771	623	499
Trajectory (inches)	-1.5	0	-3.6	-13.3	-30.5	-57.1



**Bullet:** 75 gr. TAP SBR®  
**B.C.:** .230 **S.D.:** .214  
**Muzzle Velocity:** 2201 fps  
**Barrel:** 10.5"  
**Twist Rate:** 1:7"  
**Total Penetration:** 17.0"  
**Max. Cavity:** 4.5"  
**Depth to Max. Cav.:** 4.5"  
**Entry:** 0.50"  
**Retained Weight:** 69.5 gr.



## 75 gr. TAP SBR® ITEM #81295

**APPLICATION:** ENTRY, PATROL/DUTY | **Meets FBI Protocol**

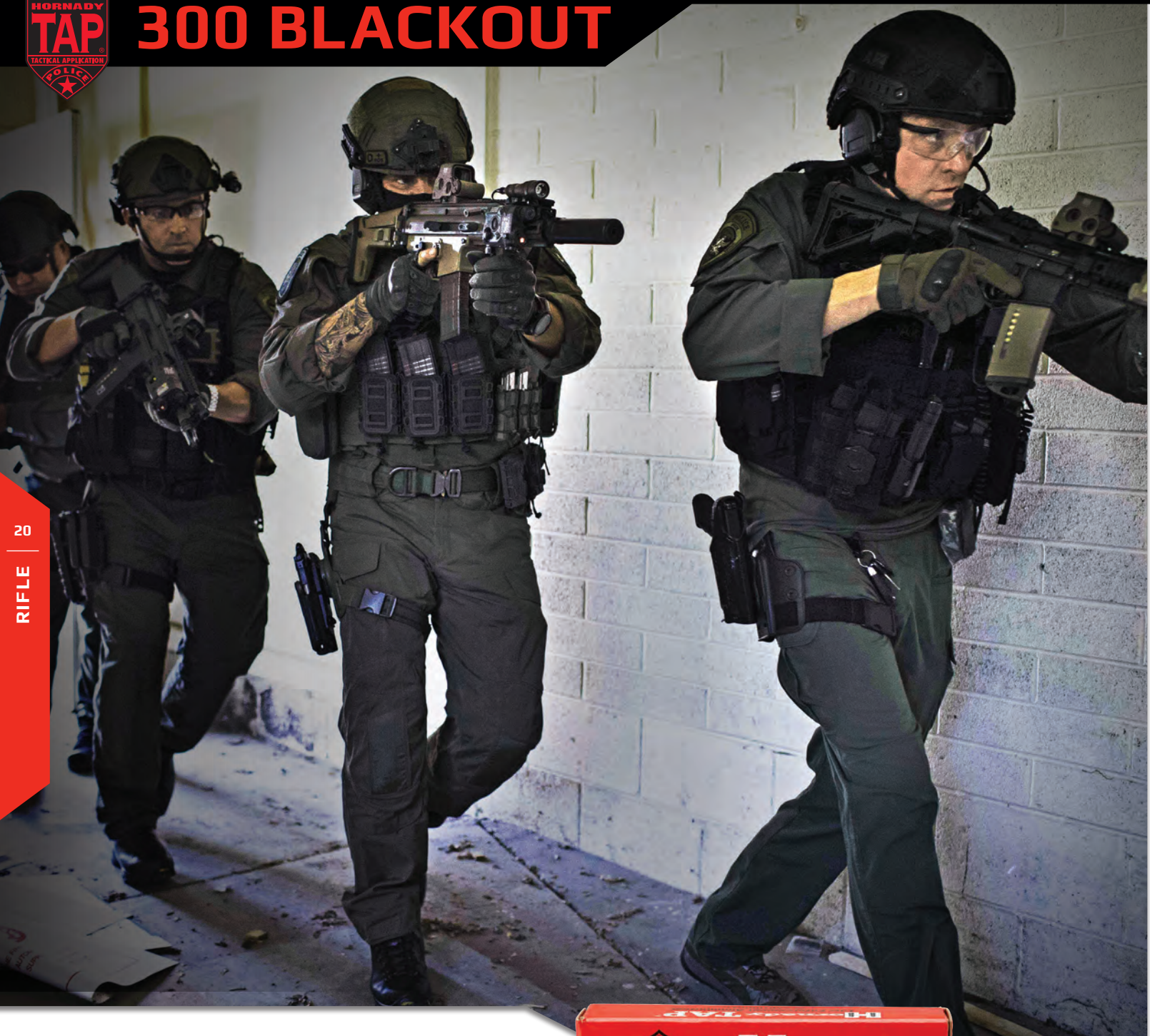
Hornady® 5.56 NATO TAP SBR® is designed specifically for 10.5"-12.5" short-barreled rifles by using proprietary propellants and a bullet designed with technology from industry leading Critical Duty® FlexLock® bullets. TAP SBR® ammunition provides exceptional performance in suppressed or unsuppressed SBR's. With virtually no flash or residue, TAP SBR® ammunition dramatically reduces sound signature, will not foul or overheat suppressors, delivers uniform velocity and accuracy, and provides controllable rate of fire in automatic platforms. TAP SBR® is the optimum choice for 10.5"-12.5" barreled 5.56 rifles.

11.5" 5.56x45mm NATO Test Barrel 1:7"	muzzle	100 yds	200 yds	300 yds	400 yds	500 yds
Velocity (fps)	2310	1965	1654	1388	1179	1042
Energy (ft lbs)	889	643	456	321	231	181
Trajectory (inches)	-1.5	0	-7.6	-28.0	-66.7	-130.3





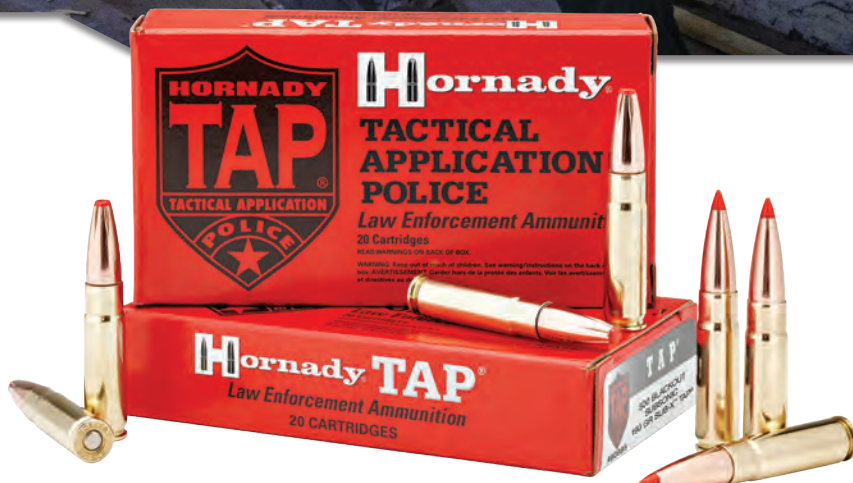
# 300 BLACKOUT



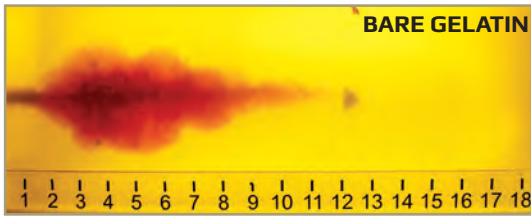
20  
RIFLE

## 300 BLACKOUT

The 300 Blackout is perhaps the most versatile cartridge currently available for LE/Military applications. With the ability to provide superior terminal performance in 8" -16" barrel lengths, it has the ability to support CQB/CQC to Patrol operations. Purpose built bullet designs allow the end user to transition between limited penetration to subsonic or supersonic barrier blind (FBI Protocol) ammunition by simply switching a magazine. 300 Blackout TAP® provides options currently unavailable for any 223/5.56 or 308 SBR/Carbine platform.



## 300 BLACKOUT 110 gr. TAP URBAN® 8" BBL | MC6 PDW | NO. 80885



**Bullet:** 110 gr. TAP Urban®  
**B.C.:** .290 **S.D.:** .166  
**Muzzle Velocity:** 2175 fps  
**Barrel:** 8"  
**Twist Rate:** 1:8"  
**Total Penetration:** 12.75"  
**Max. Cavity:** 4.0"  
**Depth to Max. Cav.:** 3.25"  
**Entry:** 0.5"  
**Retained Weight:** 83.2 gr.



### APPLICATION: ENTRY

The Hornady® 300 Blackout 110 gr. TAP Urban® is the preferred choice for use in SBRs, carbines, and rifles when the probability for barrier penetration is low. Rapid expansion provides dramatic wound cavities, massive fragmentation, and prevents over penetration on non-barrier engagements. These factors make this bullet a great choice when collateral risk is high.

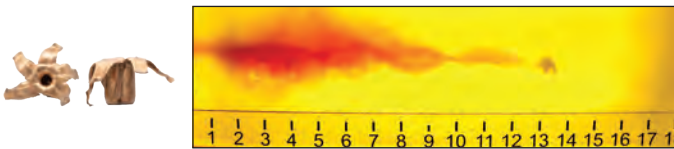
16" SAAMI Test Barrel	muzzle	100 yds	200 yds	300 yds	400 yds	500 yds
Velocity (fps)	2370	2089	1830	1594	1386	1215
Energy (ft lbs)	1372	1066	818	620	469	361
Trajectory (inches)	-1.5	0	-6.5	-23.5	-54.2	-103.2

## 300 BLACKOUT 111 gr. MONOFLEX® TAP SBR® 6.75" BBL | SIG MCX | NO. 80865

**LEAD FREE**

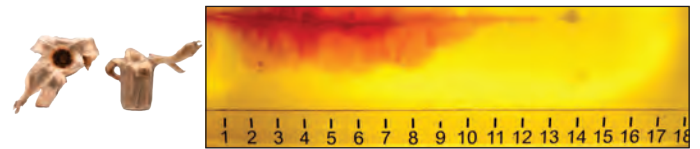
The Hornady® 300 Blackout 111 Monoflex® TAP SBR® was specifically designed to meet FBI protocol and maximize performance in rifles and pistols with barrel lengths from 6.75" to 12.5" and twist rates of 1:5" to 1:8". The newly designed 111 Monoflex® TAP SBR® features a lead-free monolithic bullet with a large internal cavity and an elongated elastomer tip. This combination allows for expansion at velocities below 1200 FPS, which equates to an expansion distance that is 3 times longer than that of a traditional 5.56 SBR featuring a 10.5" – 12.5" barrel.

**APPLICATION: ENTRY PATROL/DUTY | Meets FBI Protocol**



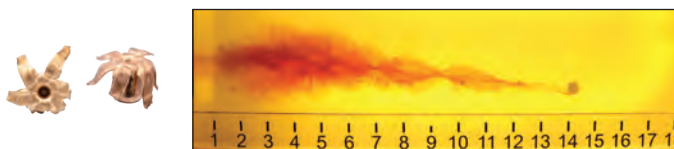
### BARE GELATIN

Penetration	Expanded Diameter	Retained Weight	Velocity (FPS)
14.0"	0.73"	89%	1893



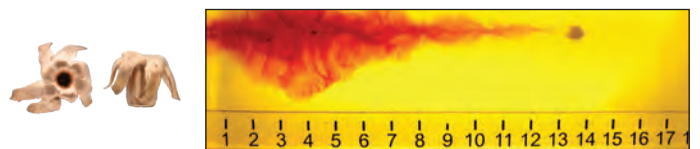
### WALLBOARD

Penetration	Expanded Diameter	Retained Weight	Velocity (FPS)
14.25"	0.66"	86%	1893



### HEAVY CLOTHING

Penetration	Expanded Diameter	Retained Weight	Velocity (FPS)
14.75"	.74"	93%	1895



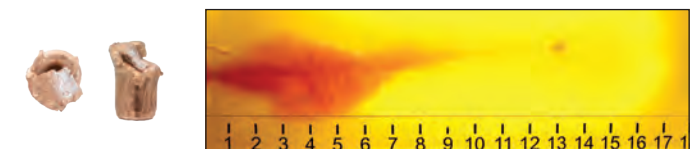
### PLYWOOD

Penetration	Expanded Diameter	Retained Weight	Velocity (FPS)
14.25"	0.65"	95%	1888



### STEEL

Penetration	Expanded Diameter	Retained Weight	Velocity (FPS)
15.0"	0.63"	92%	1875



### AUTO GLASS

Penetration	Expanded Diameter	Retained Weight	Velocity (FPS)
14.25"	0.44"	64%	1893





# 300 BLACKOUT

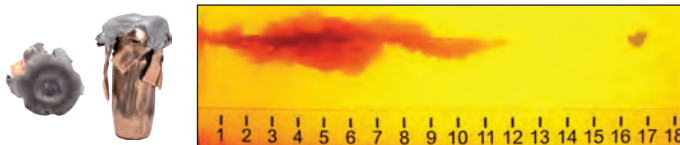
22  
RIFLE



The 300 Blackout 190 gr. Sub-X® TAP® is designed to provide barrier performance through FBI protocol when stealth is a necessity. The patented Sub-X® bullet is designed to initiate expansion at distances over 400 yards when fired from an 8" – 16" 300 Blackout rifle or pistol.

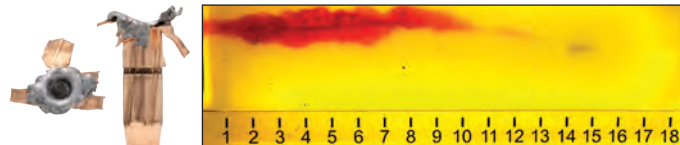
APPLICATION: ENTRY PATROL/DUTY | **Meets FBI Protocol**

**300 BLACKOUT 190 gr. SUB-X® TAP®** 8" BBL | Modern Outfitter MC6 PDW | NO. 80895 | **Meets FBI Protocol**



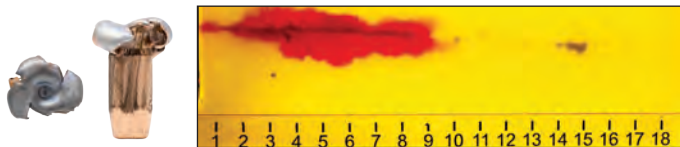
### BARE GELATIN

Penetration	Expanded Diameter	Retained Weight	Velocity (FPS)
17.0"	0.57"	92%	998



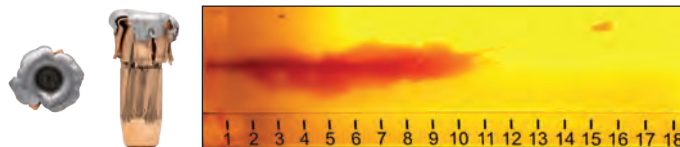
### WALLBOARD

Penetration	Expanded Diameter	Retained Weight	Velocity (FPS)
16.0"	0.424"	98%	997



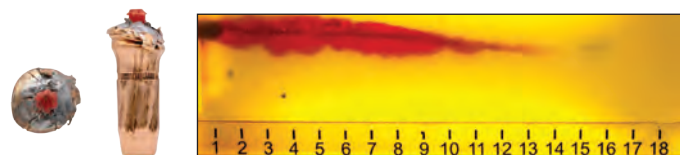
### HEAVY CLOTHING

Penetration	Expanded Diameter	Retained Weight	Velocity (FPS)
15.5"	0.59"	90%	978



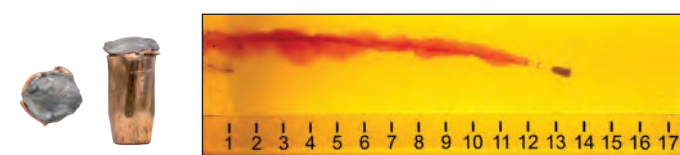
### PLYWOOD

Penetration	Expanded Diameter	Retained Weight	Velocity (FPS)
16.5"	0.52"	100%	992



### STEEL

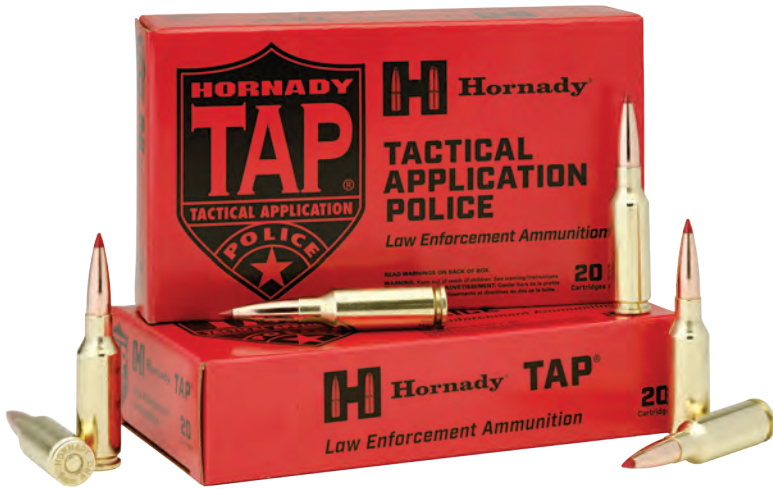
Penetration	Expanded Diameter	Retained Weight	Velocity (FPS)
16.5"	0.49"	100%	977



### AUTO GLASS

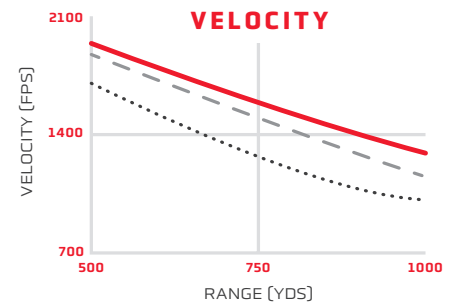
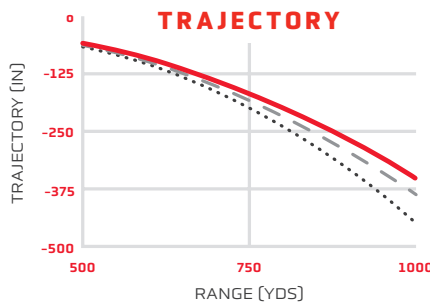
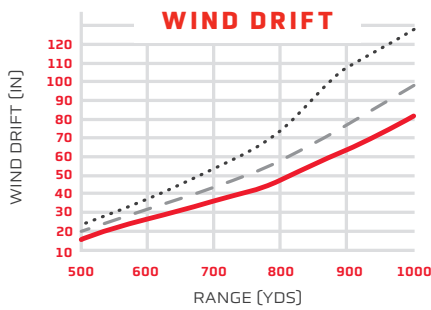
Penetration	Expanded Diameter	Retained Weight	Velocity (FPS)
14.0"	0.41"	68%	985

# 6MM ARC



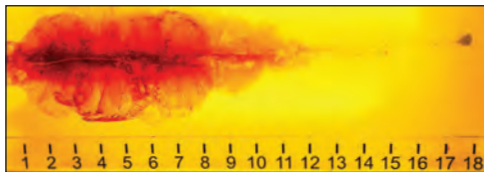
Tested, selected and fielded by a specialized group within the U.S. DoD for its multipurpose combat rifle program, the versatile 6mm ARC does much of what larger cartridges can and everything that smaller cartridges can't. Designed to meet the needs of the world's toughest critics, the 6mm ARC utilizes efficient, high-BC bullets to deliver unprecedented performance from the AR-15 platform.

**APPLICATION: ENTRY/ PRECISION RIFLE/PATROL/DUTY**



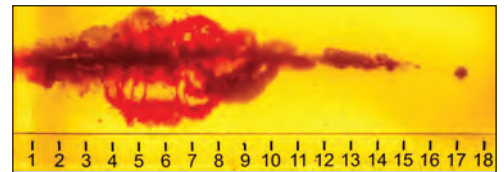
24" TEST BARREL USED FOR TESTING PURPOSES

**6mm ARC 106 gr. TAP® 18" BBL | Noveske Proof Barrel | NO. 81605 | Meets FBI Protocol**



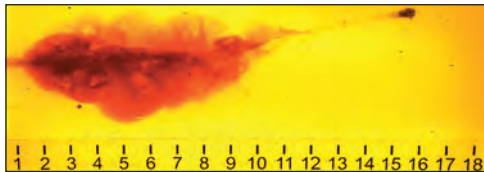
### BARE GELATIN

Penetration	Expanded Diameter	Retained Weight	Velocity (FPS)
18.0"	0.53"	73%	2647



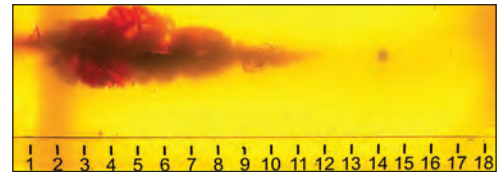
### WALLBOARD

Penetration	Expanded Diameter	Retained Weight	Velocity (FPS)
17.5"	0.48"	71%	2653



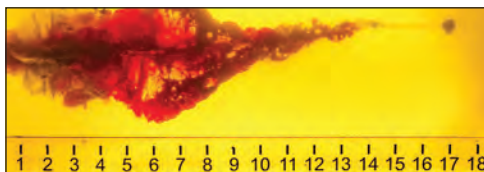
### HEAVY CLOTHING

Penetration	Expanded Diameter	Retained Weight	Velocity (FPS)
16.5"	0.44"	62%	2661



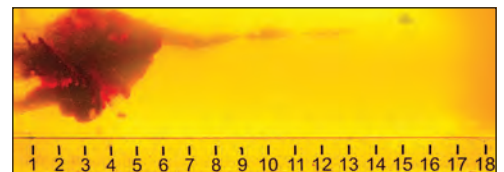
### PLYWOOD

Penetration	Expanded Diameter	Retained Weight	Velocity (FPS)
15.0"	0.45"	67%	2645



### STEEL

Penetration	Expanded Diameter	Retained Weight	Velocity (FPS)
17.5"	0.40"	66%	2677



### AUTO GLASS

Penetration	Expanded Diameter	Retained Weight	Velocity (FPS)
15.5"	0.35"	39%	2655





# 6.5 CREEDMOOR

24  
RIFLE

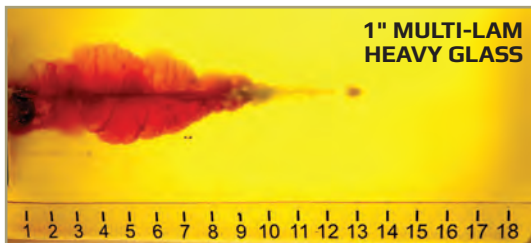


## 6.5 CREEDMOOR

Featuring inherently high Ballistic Coefficient (BC) 6.5mm bullets that also deliver high Sectional Density (SD), the 6.5 Creedmoor provides superior external ballistics and shootability with comparable terminal ballistic performance to that of the venerable 308 Winchester. Originally designed by Hornady® as a true match cartridge, the 6.5 Creedmoor is an exceptional choice for all LE/Military applications where the 308 Win had been the only option in the past.







**1" MULTI-LAM  
HEAVY GLASS**

**Firearm:** Remington 700  
**Bullet:** 140 gr. CX™ TAP® Heavy Barrier™  
**B.C.:** .350 **S.D.:** .287  
**Muzzle Velocity:** 2650 fps  
**Barrel:** 26"  
**Twist Rate:** 1:8"  
**Total Penetration:** 13.75"  
**Max. Cavity:** 4.0"  
**Depth to Max. Cav.:** 4.5"  
**Entry:** 0.0"  
**Retained Weight:** 67.7 gr.



**140 gr. CX™ TAP® HEAVY BARRIER™** ITEM #81485

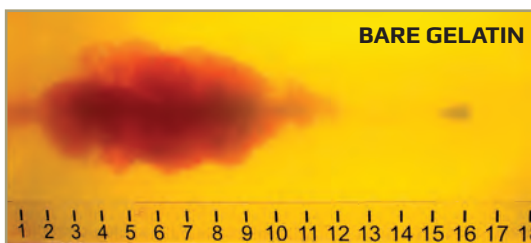
**APPLICATION:** PRECISION RIFLE

**LEAD FREE**

TAP® Heavy Barrier™ turns cover into concealment. The CX™ TAP® Heavy Barrier™ bullet is constructed of a monolithic copper alloy that shoots cleaner and fouls less than pure copper bullets. This load meets the FBI Protocol penetration requirement (12"-18") through heavy barriers (1" laminated glass, 1 ½" Lexan and 5/8" subway glass) with high weight retention. Featuring different tip geometry than TAP Precision® ammunition, this offering is loaded in a nickel-plated cartridge case making it easy to distinguish heavy barrier ammunition from other ammunition options.

**NOTE:** Not recommended for use where over-penetration may be a concern.

24" SAAMI Test Barrel 1:8"	muzzle	100 yds	200 yds	300 yds	400 yds	500 yds
Velocity (fps)	2675	2425	2188	1965	1757	1566
Energy (ft lbs)	2224	1827	1488	1200	959	762
Trajectory (inches)	-1.5	0	-4.4	-16.2	-37.0	-69.1



**BARE GELATIN**

**Firearm:** Remington 700  
**Bullet:** 147 gr. ELD® Match TAP Precision®  
**B.C. (G1):** .697 **S.D.:** .301  
**Muzzle Velocity:** 2646 fps  
**Barrel:** 24"  
**Twist Rate:** 1:8"  
**Total Penetration:** 16.0"  
**Max. Cavity:** 5.5"  
**Depth to Max. Cav.:** 2.5"  
**Entry:** 1.0"  
**Retained Weight:** 68.4 gr.



**147 gr. ELD® Match TAP Precision®** ITEM #81505

**APPLICATION:** PRECISION RIFLE | **Meets FBI Protocol**

Hornady® 6.5 Creedmoor TAP Precision® is specifically designed to meet FBI protocol and provide superior external ballistics when compared to standard 308 Win offerings. The 147 gr. ELD® Match bullet with Heat Shield® tip delivers excellent terminal performance and results in higher retained velocities, less drop, less wind drift, and more energy on target.

24" SAAMI Test Barrel 1:8"	muzzle	100 yds	200 yds	300 yds	400 yds	500 yds
Velocity (fps)	2695	2567	2443	2323	2206	2092
Energy (ft lbs)	2370	2151	1948	1761	1587	1428
Trajectory (inches)	-1.5	0	-3.8	-13.4	-29.5	-52.7



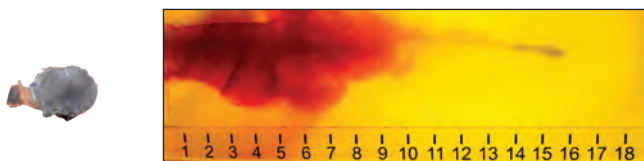
**STEEL**

Penetration	Expanded Diameter	Retained Weight	Velocity (FPS)
14.5"	0.63"	35.1%	2657



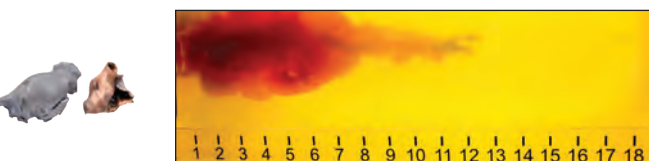
**PLYWOOD**

Penetration	Expanded Diameter	Retained Weight	Velocity (FPS)
15.5"	0.65"	54.6%	2676



**WALLBOARD**

Penetration	Expanded Diameter	Retained Weight	Velocity (FPS)
15.5"	0.76"	52.7%	2664



**AUTO GLASS**

Penetration	Expanded Diameter	Retained Weight	Velocity (FPS)
12.5"	0.64"	35.1%	2633





# 308 WIN



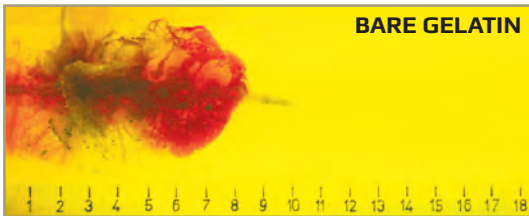
## 308 WIN

Hornady® TAP® Rifle loads offer reliable functioning, low muzzle signature and superior terminal performance. Hornady® urban/precision loads provide a low risk of over-penetration due to their enhanced expansion characteristics. The polymer tipped variants have high ballistic coefficients, making them an excellent choice for SWAT precision marksmen.

*Endorsed by the American Sniper Association.*



26  
RIFLE



BARE GELATIN

**Bullet:** 110 gr. TAP Urban®  
**B.C.:** .290 **S.D.:** .166  
**Muzzle Velocity:** 2998 fps  
**Barrel:** 20"  
**Twist Rate:** 1:12"  
**Total Penetration:** 10"  
**Max. Cavity:** 6"  
**Depth to Max. Cav.:** 4.5"  
**Entry:** 0"  
**Retained Weight:** 5.6 gr.



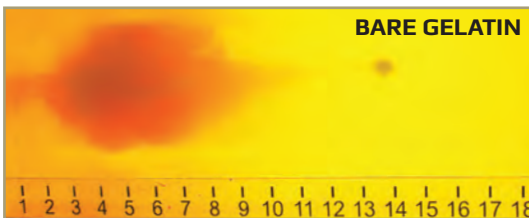
This bullet is designed to fragment entirely.

## 110 gr. TAP URBAN® ITEM #80896

**APPLICATION: ENTRY, PRECISION RIFLE**

This cartridge provides the police marksman a unique bullet that demonstrates rapid expansion, fragmentation and low retained weight. The 110 gr. TAP Urban® bullet offers the least penetration in ballistic gelatin and lower felt recoil as compared to heavier TAP® loads. The 110 gr. bullet demonstrates similar penetration to the 223 Rem 75 gr. BTHP bullet, but with substantially more temporary and permanent cavity and fragmentation, proving itself an excellent choice for high collateral risk environments.

24" SAAMI 308 Win Test Barrel 1:12"	muzzle	100 yds	200 yds	300 yds	400 yds	500 yds
Velocity (fps)	3160	2826	2516	2226	1956	1707
Energy (ft lbs)	2439	1950	1546	1210	934	712
Trajectory (inches)	-1.5	0	-2.9	-11.3	-26.8	-51.4



BARE GELATIN

**Bullet:** 155 gr. ELD® Match TAP Precision®  
**B.C. (G1):** .461 **S.D.:** .233  
**Muzzle Velocity:** 2856 fps  
**Barrel:** 26"  
**Twist Rate:** 1:12"  
**Total Penetration:** 13.75"  
**Max. Cavity:** 6.0"  
**Depth to Max. Cav.:** 3.0"  
**Entry:** 0.5"  
**Retained Weight:** 72.5 gr.

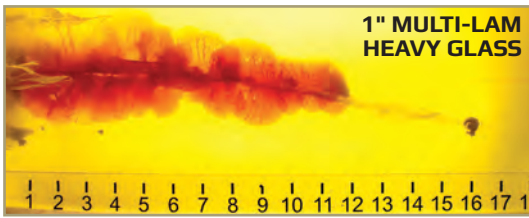


## 155 gr. ELD® MATCH TAP PRECISION® ITEM #80905

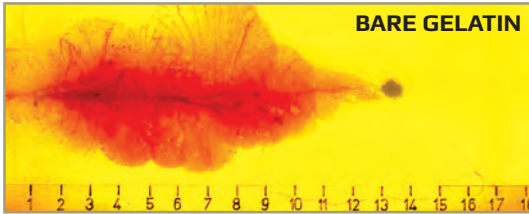
**APPLICATION: ENTRY, PRECISION RIFLE | Meets FBI Protocol**

Hornady® 308 Win 155 gr. ELD® Match TAP Precision® ammunition was designed as an improvement on the 155 gr. A-MAX® TAP Precision® load by incorporating the new ELD® Match bullet. The 155 gr. ELD® Match bullet with Heat Shield® tip delivers the excellent terminal performance TAP Precision® is known for, but features a resilient, heat resistant polymer tip that improves the ballistic coefficient, resulting in higher impact velocities, less drop, less wind drift, and more energy on target.

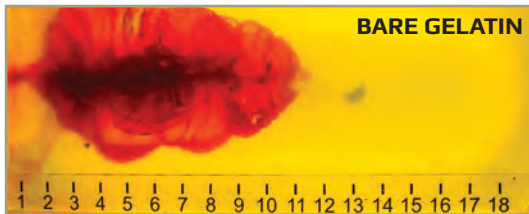
24" SAAMI 308 Win Test Barrel 1:12"	muzzle	100 yds	200 yds	300 yds	400 yds	500 yds
Velocity (fps)	2785	2589	2401	2222	2050	1886
Energy (ft lbs)	2669	2307	1985	1699	1446	1224
Trajectory (inches)	-1.5	0	-3.7	-13.4	-30.2	-55.4



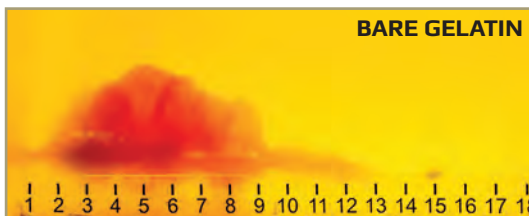
**Bullet:** 165 gr. CX™ TAP® Heavy Barrier™  
**B.C.:** .447 **S.D.:** .248  
**Muzzle Velocity:** 2735 fps  
**Barrel:** 26"  
**Twist Rate:** 1:12"  
**Total Penetration:** 16.25"  
**Max. Cavity:** 4.0"  
**Depth to Max. Cav.:** 3.5"  
**Entry:** 0.0"  
**Retained Weight:** 116.5 gr.



**Bullet:** 168 gr. A-MAX®  
**B.C.:** .475 **S.D.:** .253  
**Muzzle Velocity:** 2537 fps  
**Barrel:** 20"  
**Twist Rate:** 1:12"  
**Total Penetration:** 14.25"  
**Max. Cavity:** 6.5"  
**Depth to Max. Cav.:** 7"  
**Entry:** 0.5"  
**Retained Weight:** 120.8 gr.



**Bullet:** 168 gr. ELD® MATCH  
**B.C.:** .523 **S.D.:** .253  
**Muzzle Velocity:** 2718 fps  
**Barrel:** 26"  
**Twist Rate:** 1:12"  
**Total Penetration:** 13.25"  
**Max. Cavity:** 7"  
**Depth to Max. Cav.:** 3.75"  
**Entry:** 0.5"  
**Retained Weight:** 125.2 gr.



**Bullet:** 168 gr. ELD® MATCH  
**B.C.:** .523 **S.D.:** .253  
**Muzzle Velocity:** 2542 fps  
**Barrel:** 16"  
**Twist Rate:** 1:8"  
**Total Penetration:** 15.25"  
**Max. Cavity:** 5"  
**Depth to Max. Cav.:** 4.5"  
**Entry:** 0.5"  
**Retained Weight:** 101.4 gr.



## 165 gr. CX™ TAP® HEAVY BARRIER™ ITEM #80985

APPLICATION: PRECISION RIFLE

LEAD FREE

TAP® Heavy Barrier™ turns cover into concealment. The CX™ TAP® Heavy Barrier™ is constructed of a monolithic copper alloy that shoots cleaner than pure copper and fouls less. The 165 gr. CX™ bullets are designed to meet FBI Protocol (12" – 18") through heavy barriers such as 1" laminated glass, 1 1/2" Lexan, and 5/8" subway glass with exceptional weight retention while still delivering superior terminal performance. This offering is loaded in a nickel-plated cartridge case making it easy to distinguish from other options.

24" SAAMI 308 Win Test Barrel 1:12"	muzzle	100 yds	200 yds	300 yds	400 yds	500 yds
Velocity (fps)	2610	2413	2224	2044	1872	1711
Energy (ft lbs)	2496	2132	1812	1530	1284	1072
Trajectory (inches)	-1.5	0	-4.5	-16.0	-35.9	-65.8

## 168 gr. A-MAX® TAP PRECISION® ITEM #80965

APPLICATION: ENTRY, PRECISION RIFLE | Meets FBI Protocol

The 168 gr. A-MAX® bullet is a match grade bullet with the performance advantages of a polymer tip. Standard barrier performance is exemplary and this load demonstrates controlled and impressive soft tissue expansion without over penetration. The Hornady® 168 gr. A-MAX® TAP Precision® offers industry leading all-around performance for law enforcement precision marksmen providing the ability to stop a threat.

Meets FBI barrier penetration performance requirements.  
 Endorsed by the American Sniper Association.

24" SAAMI 308 Win Test Barrel 1:12"	muzzle	100 yds	200 yds	300 yds	400 yds	500 yds
Velocity (fps)	2680	2494	2316	2145	1981	1825
Energy (ft lbs)	2679	2320	2000	1715	1464	1242
Trajectory (inches)	-1.5	0	-4.1	-14.7	-32.9	-59.9

## 168 gr. ELD® MATCH TAP PRECISION® ITEM #80725

APPLICATION: ENTRY, PRECISION RIFLE | Meets FBI Protocol

Hornady® 308 Win 168 gr. ELD® MATCH TAP PRECISION® ammunition was designed as an improvement on the 168 gr. A-MAX TAP PRECISION® load by incorporating the new ELD® Match bullet. The 168 gr. ELD® Match bullet with Heat Shield® tip delivers the excellent terminal performance TAP Precision® is known for, but features a resilient, heat resistant polymer tip that improves the ballistic coefficient, resulting in higher impact velocities, less drop, less wind drift, and more energy on target.

24" SAAMI 308 Win Test Barrel 1:12"	muzzle	100 yds	200 yds	300 yds	400 yds	500 yds
Velocity (fps)	2710	2540	2376	2218	2066	1920
Energy (ft lbs)	2739	2406	2105	1835	1592	1375
Trajectory (inches)	-1.5	0	-3.9	-14.0	-31.1	-56.4

## 168 gr. ELD® MATCH TAP AR™ ITEM #80715

APPLICATION: ENTRY, PRECISION RIFLE | Meets FBI Protocol

Designed specifically for the 308 AR-10 platform and its variants, the resilient tip of the ELD® Match bullet aids in reliable feed and function, and the propellant is specifically tailored to efficiently operate in the AR-10. The 168 gr. ELD® Match bullet with Heat Shield® tip delivers the excellent terminal performance TAP Precision® is known for, but features a resilient, heat resistant polymer tip that improves the ballistic coefficient, resulting in higher impact velocities, less drop, less wind drift, and more energy on target.

24" SAAMI 308 Win Test Barrel 1:12"	muzzle	100 yds	200 yds	300 yds	400 yds	500 yds
Velocity (fps)	2670	2501	2339	2182	2031	1887
Energy (ft lbs)	2659	2333	2040	1776	1539	1329
Trajectory (inches)	-1.5	0	-4.1	-14.5	-32.3	-58.5





# 300 WIN MAG

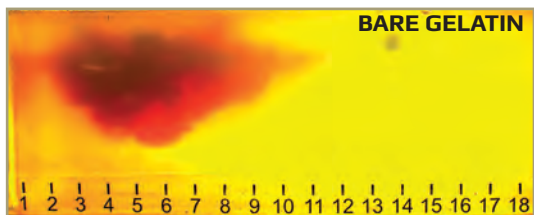


28  
RIFLE



## 300 WIN MAG

Hornady® 300 Win Mag 178 gr. ELD® MATCH TAP PRECISION® ammunition was designed as an improvement on the 178 gr. A-MAX TAP PRECISION® load by incorporating the new ELD® Match bullet. Offering higher velocity and energy that law enforcement professionals may require over the standard 308 Win, makes this a great alternative to utilize in a variety of situations. The tip initiated expansion of the ELD® Match bullet ensures uniform expansion and penetration through a variety of barriers, while mitigating liability due to over penetration.



**Bullet:** 178 gr. ELD® MATCH  
**B.C.:** .547 **S.D.:** .268  
**Muzzle Velocity:** 2894 fps  
**Barrel:** 22"  
**Twist Rate:** 1:8"  
**Total Penetration:** 14.25"  
**Max. Cavity:** 8.5"  
**Depth to Max. Cav.:** 4.25"  
**Entry:** 0.5"  
**Retained Weight:** 82.8 gr.



## 178 gr. ELD® MATCH TAP PRECISION® ITEM #82045

APPLICATION: PRECISION RIFLE

24" SAAMI 300 Win Test Barrel 1:10"	muzzle	100 yds	200 yds	300 yds	400 yds	500 yds
Velocity (fps)	2960	2788	2622	2462	2308	2159
Energy (ft lbs)	3463	3071	2717	2396	2106	1843
Trajectory (inches)	-1.5	0	-3.0	-11.0	-24.8	-45.2

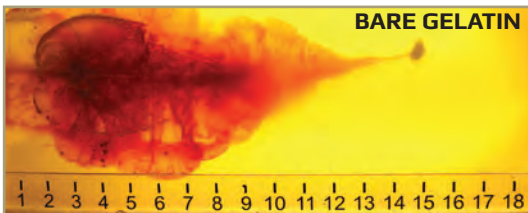




## 300 PRC

The 300 PRC 225 ELD® Match TAP Precision® was designed and adopted to fulfill a specific need within the Department of Defense by increasing hit probability and providing exceptional terminal performance from 0 – 2000 yards. This cartridge is an efficient, non-belted magnum featuring a 225 grain ELD® Match bullet with a Heat Shield® Tip. While utilizing the same bolt face as a 300 Win Mag, the 300 PRC headspaces off the shoulder rather than a belt, providing superior accuracy. Following similar design characteristics present in the 6.5 Creedmoor, the 300 PRC provides higher velocities and the ability to run longer/heavier bullets than the 300 Win Mag, making it a much more effective cartridge.

The ELD® Match with Heat Shield® Tip results in higher retained velocities, less drop, less wind drift, and is designed to expand at velocities as low as 1650 FPS making it an excellent choice for Military, SWAT, and Precision Rifle Marksman.



**Bullet:** 225 gr. ELD® MATCH  
**B.C.:** .777 **S.D.:** .339  
**Muzzle Velocity:** 2650 fps  
**Barrel:** 26" Proof Carbon Fiber  
**Twist Rate:** 1:8"  
**Total Penetration:** 15.0"  
**Max. Cavity:** 8.0"  
**Depth to Max. Cav.:** 4.5"  
**Entry:** 0.0"  
**Retained Weight:** 95.8 gr.



### 225 gr. ELD® MATCH TAP PRECISION® ITEM #81215

APPLICATION: PRECISION RIFLE

24" SAAMI 300 PRC Test Barrel 1:8"	muzzle	100 yds	200 yds	300 yds	400 yds	500 yds
Velocity (fps)	2810	2692	2577	2465	2356	2250
Energy (ft lbs)	3945	3620	3318	3036	2773	2529
Trajectory (inches)	-1.5	0	-3.3	-11.9	-26.1	-46.7





# SHOTGUN

30  
SHOTGUN



## SHOTGUN

TAP® 12 gauge shotgun ammunition lives up to the legendary Hornady® name in every way – reliable functioning, consistent performance and tighter patterns without modification to the shotgun.

Hornady® offers multiple loads specially designed for the type of shotgun you use and the situations you face. Both the Reduced Recoil™ (blue) and Light Magnum® (red) loadings in 00 buck and slug offer reliable functioning, consistent performance, and better patterns than traditional shotgun shells through use of specialized wad technology. Our TAP® Entry™ (black) is designed to be utilized for multiple applications – breaching, entry, and training.





# 00 BUCK

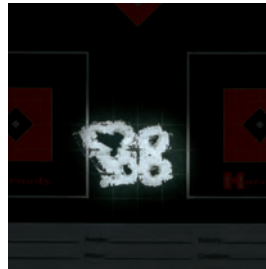
## 12 GA 2¾" TAP® REDUCED RECOIL™ 00 BUCK

ITEM #86265

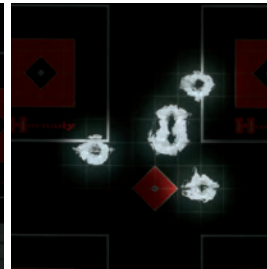
Hornady® TAP® Reduced Recoil™ (blue hull) is a reduced velocity load designed primarily for pump action shotguns. It comes loaded in a blue hull with a load delivering a velocity of 1,100 fps (30" test barrel.)



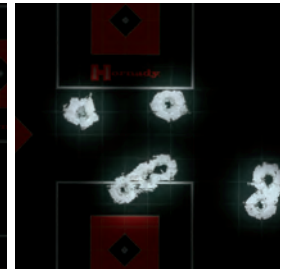
<b>FIREARM: 18½" BBL</b>		
<b>Remington 870 Police Magnum</b>		
Shot Size	Pellet Count	Muzzle Velocity (fps)
00 Buck	8	991



7 Yards 1.325"



15 Yards 2.687"



25 Yards 4.437"

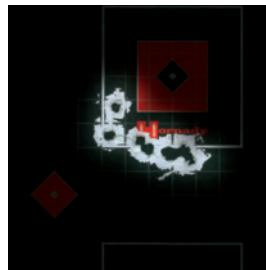
## 12 GA 2¾" TAP® LIGHT MAGNUM® 00 BUCK

ITEM #86275

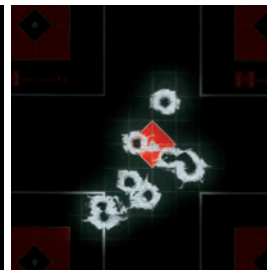
Hornady® TAP® Light Magnum® Buckshot (red hull) is loaded to a velocity of 1600 fps (30" test barrel) to ensure proper functioning in semi-automatic police shotguns. The Light Magnum® Buckshot can also be used in pump action shotguns.



<b>FIREARM: 18½" BBL</b>		
<b>Benelli M1 Super 90</b>		
Shot Size	Pellet Count	Muzzle Velocity (fps)
00 Buck	8	1428



7 Yards 1.875"



15 Yards 2.75"



25 Yards 5.187"

# RIFLED SLUG

## 12 GA 2¾" 1 OZ. TAP® REDUCED RECOIL™ RIFLED SLUG

ITEM #86285

Hornady® TAP® Reduced Recoil™ Rifled Slug (blue hull) is loaded to a velocity of 1350 fps (30" test barrel). This rifled slug is designed to be used in pump action shotguns with smooth bore barrels.

<b>FIREARM: 18½" BBL   870 Police Magnum   Smooth Bore</b>		
Description	Shot Size	Muzzle Velocity (fps)
Rifled Slug	1 oz.	1350



25 Yards 2.0"

## 12 GA 2¾" 1 OZ. TAP® LIGHT MAGNUM® RIFLED SLUG

ITEM #86235

Hornady® TAP® Light Magnum® Rifled Slug (red hull) is loaded to a velocity of 1600 fps (30" test barrel). Reliably functions in smooth bore semi-automatic police shotguns while maintaining SAAMI pressure specifications.

<b>FIREARM: 18½" BBL   Benelli M1 Super 90   Smooth Bore</b>		
Description	Shot Size	Muzzle Velocity (fps)
Rifled Slug	1 oz.	1600



25 Yards 2.75"





## TRAINING™

Hornady® Training™ ammunition provides a cost effective firearms training alternative to the standard TAP® and Critical DUTY® loads. Loaded with proven propellants, coupled with high quality bullets, cases, and primers, Hornady® Training™ ammunition is designed to deliver point of aim / point of impact comparable to our TAP® and Critical DUTY® offerings. Hornady® Training™ Ammunition - an economical, high quality solution for Law Enforcement training.



*NOTICE: These products are not intended for duty use.*

## HANDGUN

### 9MM LUGER 115 gr. FMJ TRAINING™ (BRASS CASE) ITEM #90269

4" Test bbl	muzzle	50 yds	100 yds
Velocity (fps)	1135	1032	959
Energy (ft lbs)	329	272	235

### 9MM LUGER 135 gr. FMJ TRAINING™ (BRASS CASE) ITEM #90238

4" Test bbl	muzzle	50 yds	100 yds
Velocity (fps)	1010	960	918
Energy (ft lbs)	306	276	253

### 357 SIG 135 gr<sup>®</sup> FMJ TRAINING™ (BRASS CASE) ITEM #91298

5" Test bbl	muzzle	50 yds	100 yds
Velocity (fps)	1210	1091	1008
Energy (ft lbs)	439	357	305

### 40 S&W 175 gr. FMJ TRAINING™ (BRASS CASE) ITEM #91374

4" Test bbl	muzzle	50 yds	100 yds
Velocity (fps)	1010	948	899
Energy (ft lbs)	396	350	314

### 45 AUTO 220 gr. FMJ TRAINING™ (BRASS CASE) ITEM #90924

5" Test bbl	muzzle	50 yds	100 yds
Velocity (fps)	900	863	829
Energy (ft lbs)	396	363	336

# RIFLE

## 223 REM 55 gr. SP TRAINING™ (BRASS CASE) ITEM #80255

24" Test bbl	muzzle	100 yds	200 yds
Velocity (fps)	3240	2823	2443
Energy (ft lbs)	1282	973	728
Trajectory (inches)	-1.5	0	-2.9

## 223 REM 55 gr. FMJ TRAINING™ (BRASS CASE) ITEM #80271

24" Test bbl	muzzle	100 yds	200 yds
Velocity (fps)	3240	2837	2468
Energy (ft lbs)	1282	983	744
Trajectory (inches)	-1.5	1.4	0

## 5.56 NATO 75 gr. TAP SBR® TRAINING™ (BRASS CASE) ITEM #81292

20" Test bbl	muzzle	100 yds	200 yds
Velocity (fps)	2310	2105	1911
Energy (ft lbs)	888	738	608
Trajectory (inches)	-1.5	0	-6.4

## 223 REM 55 gr. FMJ-BT TRAINING™ (BRASS CASE) ITEM #80275

24" Test bbl	muzzle	100 yds	200 yds
Velocity (fps)	3240	2836	2467
Energy (ft lbs)	1282	982	743
Trajectory (inches)	-1.5	0	-2.9

## 5.56 NATO 55 gr. FMJ TRAINING™ (BRASS CASE) ITEM #81278

20" Test bbl	muzzle	100 yds	200 yds
Velocity (fps)	3240	2837	2468
Energy (ft lbs)	1282	983	744
Trajectory (inches)	-1.5	1.4	0

## 300 BLACKOUT 110 gr. NTX® TRAINING™ (BRASS CASE) ITEM #80864

**LEAD FREE**

16" Test bbl	muzzle	100 yds	200 yds
Velocity (fps)	2080	1726	1422
Energy (ft lbs)	1057	728	494
Trajectory (inches)	-1.5	0	-10.3

# FRANGIBLE HANDGUN & RIFLE **LEAD FREE**

Hornady® Frangible Training Ammunition is designed to provide a lead-free alternative to our traditional training ammunition line. This ammunition gives law enforcement officers the ability to train using steel targets at close distances while reducing the risk of ricochets. Since this ammunition is entirely lead-free, it serves as an excellent choice for indoor range use. Hornady® Frangible Training™ Ammunition features brass cases and lead-free primers and projectiles that are matched with optimized propellants to provide the very best in frangible ammunition.

## 9MM LUGER 90 gr. FRANGIBLE TRAINING™ (BRASS CASE) ITEM #91230

4" Test bbl	muzzle	100 yds	200 yds
Velocity (fps)	1300	1124	1011
Energy (ft lbs)	338	253	204

## 40 S&W 125 gr. FRANGIBLE TRAINING™ (BRASS CASE) ITEM #91319

4" Test bbl	muzzle	100 yds	200 yds
Velocity (fps)	1210	1069	977
Energy (ft lbs)	406	317	265

## 5.56 NATO 45 gr. FRANGIBLE TRAINING™ (BRASS CASE) ITEM #81251

20" Test bbl	muzzle	100 yds	200 yds
Velocity (fps)	3050	2237	1571
Energy (ft lbs)	929	500	247
Trajectory (inches)	-1.5	0	-5.8

## 357 SIG 90 gr FRANGIBLE TRAINING™ (BRASS CASE) ITEM #91285

5" Test bbl	muzzle	50 yds	100 yds
Velocity (fps)	1440	1209	1056
Energy (ft lbs)	414	292	223

## 45 AUTO 145 gr. FRANGIBLE TRAINING™ (BRASS CASE) ITEM #90931

5" Test bbl	muzzle	100 yds	200 yds
Velocity (fps)	1130	974	878
Energy (ft lbs)	411	305	248

## 300 BLACKOUT 110 gr. FRANGIBLE TRAINING™ (BRASS CASE) ITEM #80870

16" Test bbl	muzzle	100 yds	200 yds
Velocity (fps)	2375	2094	1834
Energy (ft lbs)	1378	1071	623
Trajectory (inches)	-1.5	3.2	0





# RIFLE

Arm yourself with ammunition from a legendary company that understands bullet design and ballistic physics better than anyone else in the world – Hornady®.



## 338 LAPUA MAGNUM 250 gr. BTHP ITEM #8230

Ballistic Coefficient: .670	250 gr. BTHP (24" Test bbl)	muzzle	100 yds	200 yds	300 yds	400 yds	500 yds
Sectional Density: .313	Velocity (fps)	2850	2712	2579	2449	2323	2201
	Energy (ft lbs)	4509	4083	3691	3330	2996	2689
	Trajectory (inches)	-1.5	0	-3.2	-11.7	-26.0	-46.7



## 338 LAPUA 285 gr. ELD<sup>®</sup> MATCH ITEM #82300

Ballistic Coefficient: .789	285 gr. ELD MATCH (24" Test bbl)	muzzle	100 yds	200 yds	300 yds	400 yds	500 yds
Sectional Density: .356	Velocity (fps)	2745	2630	2519	2410	2304	2200
	Energy (ft lbs)	4768	4378	4015	3676	3359	3064
	Trajectory (inches)	-1.5	0	-1.8	-7.2	-20.5	-40.3



## 50 BMG 750 gr. A-MAX<sup>®</sup> ITEM #8270

Ballistic Coefficient: 1.050	750 gr. A-MAX (36" Test bbl)	muzzle	100 yds	200 yds	300 yds	400 yds	500 yds
Sectional Density: .412	Velocity (fps)	2810	2722	2637	2552	2470	2389
	Energy (ft lbs)	13149	12342	11576	10849	10158	9502
	Trajectory (inches)	-1.5	0.0	-3.2	-11.4	-24.9	-44.2



# RAPiD® SAFES



All RAPiD® Safes include a digital keypad as an alternate form of entry.



2600KP

2700KP



35  
SECURITY

## RAPiD® SAFE 2600KP, 2700KP AND 4800KP

These RAPiD® Safes provide convenient, tamper-proof security for handguns and other valuables while you're at home or traveling. Their small footprint fits easily on a nightstand or in a suitcase, so your firearm is always protected and ready to go. With three sizes, there's an option for any size handgun.

### CERTIFIED CHILD-RESISTANT

Exceeds ASTM International safety standards for child and pry resistance, lock strength, drop/pick/saw tests and hinge attack resistance.

### SAFE AND READY

AC & battery power means your handgun is both protected and ready to go 24/7.

### MOBILE SECURITY

Included cable allows safe to be secured to a stationary object. Meets TSA requirements for handgun safety in checked luggage.\*



4800KP

**RAPiD® SAFE 2600KP  
(LARGE)**  
No. 98177

Fits many 4-inch barrel pistols and 2-inch revolvers.\*

Exterior: 8.7"W x 2.9"H x 10.7"D  
Interior: 7.7"W x 2.2"H x 7"D

**RAPiD® SAFE 2700KP  
(X-LARGE)**  
No. 98172

Fits most 1911-size pistols and 4-inch revolvers.\*

Exterior: 8.7"W x 2.9"H x 12.7"D  
Interior: 7.7"W x 2.2"H x 9"D

**RAPiD® SAFE 4800KP  
(XX-LARGE)**  
No. 98141

Fits two 1911-sized pistols or one large revolver.\*

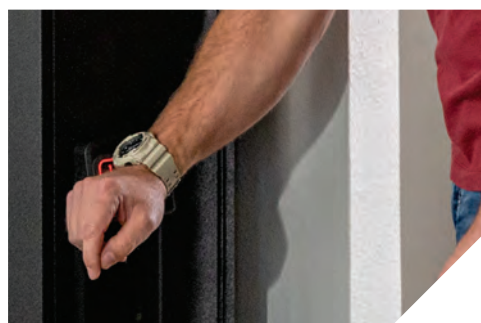
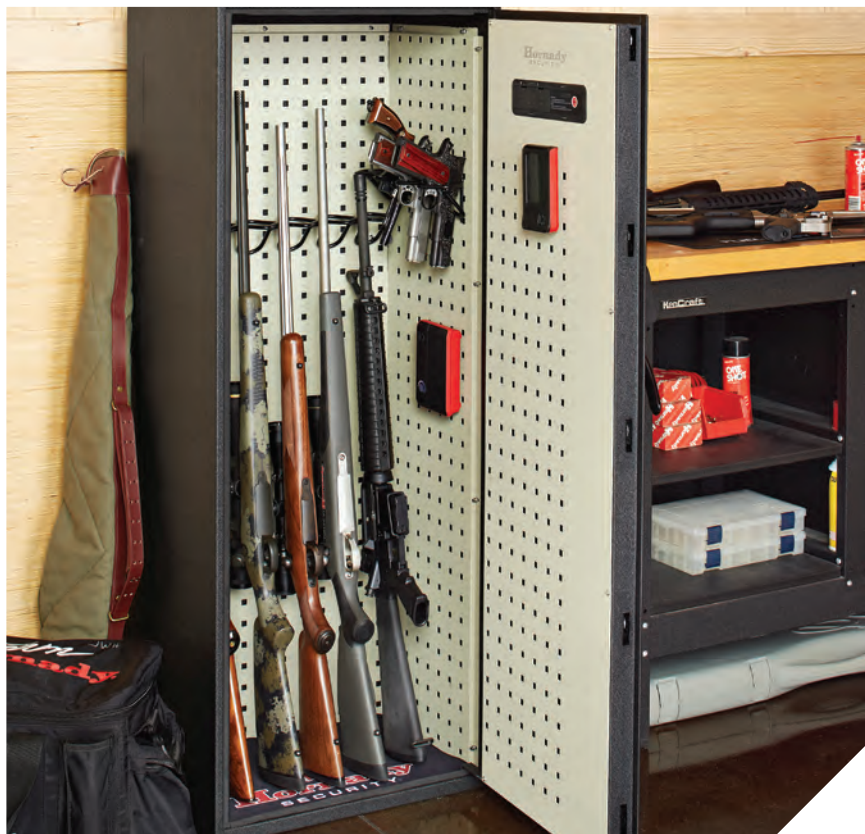
Exterior: 12"W x 2.9"H x 10.5"D  
Interior: 11"W x 2.2"H x 7.2"D

**\*IMPORTANT:** Do not store loaded firearms in any safe or lock box. Follow local, state and federal laws for firearm storage and transport. Check TSA regulations and airline policies before traveling with any portable safe. Check dimensions of your firearm against safe's internal dimensions. Firearm and firearm accessories not included.





# RAPID® SAFES



36

SECURITY

## RAPID® SAFE READY VAULT™

Available in two sizes, the Square-Lok™ interior provides numerous configurations for maximum storage flexibility. Rearrange racks or purchase additional Square-Lok™ accessories as needed. The Ready Vault™ utilizes otherwise wasted space to keep all your guns and gear secure.

### WIFI CONNECTIVITY KEEPS YOU INFORMED

Keep tabs on your Ready Vault™ safe through your smartphone. Download the Hornady Security® app and receive an alert when the safe is unlocked.

### ADAPTABLE STORAGE

Square-Lok™ gun racks (included) and other accessories (sold separately) fit wherever you choose on metal interior peg walls. LED lights, shelves, gun racks, hygrometer and dehumidifiers are Square-Lok™ compatible.

### PATENT PENDING GUN RACKS

Dual-purpose gun racks use spaces between barrels to accommodate up to eight long guns and 14 handguns. PVC coating protects the guns' finish while deep standoffs provide room for large optics.

### PADDED FLOOR MAT

Neoprene floor mat prevents gun stocks from slipping and allows long guns to be stored safely upright.

### SAFE AND READY

AC and battery power ensure your gun and other valuables are protected and ready 24/7.



### RAPID® SAFE COMPACT READY VAULT™ W/ WIFI No. 98196WIFI

Exterior: 10"W x 52.2"H x 10"D\*  
(\*add 1.7" for handle)  
Interior: 9.8"W x 51.8"H x 8"D  
Weight: 70 lbs.

### Metal Shelf No. 98253

### RAPID® SAFE READY VAULT™ W/ WIFI No. 98195WIFI

Exterior: 20"W x 52.2"H x 15.1"D\*  
(\*add 1.7" for handle)  
Interior: 19"W x 51.8"H x 12.7"D  
Weight: 170 lbs.

### Ready Vault™ Shelf Kit No. 98252



**RAPID® SAFE  
READY VAULT™ W/ WiFi**  
No. 98196WiFi

**RAPID® SAFE  
READY VAULT™ W/ WiFi**  
No. 98195WiFi



## SQUARE·LOK™ ACCESSORIES

Utilize your space your way with the revolutionary Square-Lok™ modular organizing system. Accessories lock in easily and hold firmly for countless storage configurations. Choose the pieces you need and the arrangement that works best for you.

- ① **GUN RACKS**  
2-Gun No. 95792  
4-Gun No. 95793
- ④ **DEHUMIDIFIER**  
No. 95900
- ② **PARTS BIN**  
No. 95791
- ⑤ **HYGROMETER**  
No. 95909
- ③ **WIRE SHELF**  
No. 95790

**\*IMPORTANT:** Do not store loaded firearms in any safe or lock box. Follow local, state and federal laws for firearm storage and transport. Check TSA regulations and airline policies before traveling with any portable safe. Check dimensions of your firearm against safe's internal dimensions. Firearm and firearm accessories not included.





# RAPID® SAFES



Mount horizontally or vertically.



## RAPID® SAFE AR GUNLOCKERS

The AR Gunlocker stows neatly under a bed, in a closet or the back of an SUV, providing total security with its fully enclosed design. Available in two sizes, secure up to three tactical-length rifles or shotguns and access them quickly and efficiently, thanks to RFID technology.

### VERSATILE AND SECURE

Mount horizontally or vertically, and secure to wall, floor or other stationary object with pre-drilled mounting holes.

### EASY, CONVENIENT ACCESS

Front-end spring-loaded door opens when unlocked to provide instant access to carbine-length weapons.

### CERTIFIED CHILD-RESISTANT

Exceeds ASTM International safety standards for child and pry resistance, lock strength, drop/pick/saw tests and hinge attack resistance.

### PROTECTIVE INTERIOR

Padded interior and foam gun mounts preserve firearms' appearance.



### RAPID® SAFE AR GUNLOCKER No. 98190

Holds up to two tactical length rifles.\*

Exterior: 42"W x 15.25"H x 6.75"D

Interior: 40.5"W x 13.5"H x 5.5"D

Weight: 50 lbs.



### RAPID® SAFE AR GUNLOCKER XL No. 98191

Holds up to three tactical length rifles.\*

Exterior: 42"W x 15.25"H x 10"D

Interior: 40.5"W x 13.5"H x 8.75"D

Weight: 62 lbs.

**\*IMPORTANT:** Do not store loaded firearms in any safe or lock box. Follow local, state and federal laws for firearm storage and transport. Check TSA regulations and airline policies before traveling with any portable safe. Check dimensions of your firearm against safe's internal dimensions. Firearm and firearm accessories not included.



## RAPiD<sup>®</sup> SAFE SHOTGUN WALL LOCK

Keeping a firearm for self-defense hinges on how fast you can retrieve it. Tuck away the RAPiD<sup>®</sup> Safe Shotgun Wall Lock behind a door or in a closet — anywhere you need quick access. Designed specifically for shotguns, it fits most models, keeping them secure from unauthorized users but ready when personal protection depends on it.

### VERSATILE AND CONVENIENT

The Shotgun Wall Lock mounts horizontally or vertically, whichever fits your space best.

### EASY TO SECURE

Pre-drilled mounting holes and included hardware make installation quick and simple.

### SAFE AROUND CHILDREN

Exceeds ASTM International and California DOJ safety standards for child and pry resistance, lock strength, drop/pick/saw tests and hinge attack resistance.

### PROTECTIVE INTERIOR

Padded interior protects your shotgun from scratches and marring.



**RAPiD<sup>®</sup> SAFE  
SHOTGUN WALL LOCK**  
No. 98180

Exterior: 8.5"x 9.2"x 2.7"

**\*IMPORTANT:** Do not store loaded firearms in any safe or lock box. Follow local, state and federal laws for firearm storage and transport. Check TSA regulations and airline policies before traveling with any portable safe. Check dimensions of your firearm against safe's internal dimensions. Firearm and firearm accessories not included.





## AMMO CABINET

Safely store and organize equipment and gear in the versatile Hornady® Ammo Cabinet. Its modular Square-Lok™ system allows you to arrange space and add features that suit your needs.

### VERSATILE FOR ALL YOUR STORAGE NEEDS

Store ammo cans, cartons and boxes and secure valuable reloading tools, hunting gear, equipment and supplies. The adjustable shelves are capable of supporting up to 100 pounds. Bolt multiple cabinets together for increased storage capacity. Door can be oriented for left or right opening.

### CUSTOMIZED MODULAR DESIGN

Square-Lok™ walls offer increased air flow and offer a fully customizable modular design. Additional Square-Lok™ accessories can be purchased separately.

### PACKAGED WITH ORGANIZATIONAL ACCESSORIES

The Ammo Cabinet is packaged with a magnetic motion light, two shelves, magnetic rewritable shelf labels, three shelf mats and three plastic ammo cans.

**No. 95109**

Exterior: 18"x 12"x 40"

Weight: 47.8 lbs.

COMPATIBLE WITH

## SQUARE-LOK™ ACCESSORIES

Maximize the space in your safe, gun room or work bench with the revolutionary Square-Lok™ modular organizing system. Accessories lock in easily and hold firmly for countless storage configurations. Choose the pieces you need and the arrangement that works best for you.



Customize your space with compatible Square-Lok™ accessories. Sold separately.

[hornadysecurity.com/squarelok](http://hornadysecurity.com/squarelok)

**\*IMPORTANT:** Do not store loaded firearms in any safe or lock box. Follow local, state and federal laws for firearm storage and transport. Check TSA regulations and airline policies before traveling with any portable safe. Check dimensions of your firearm against safe's internal dimensions. Firearm and firearm accessories not included.



Many full-size SUVs will accommodate the XXL Under Bed Safe and the Large Under Bed Safe fits most smaller SUVs.

## UNDER BED SAFES

Available in three convenient sizes, SnapSafe® Under Bed Safes provide the perfect security wherever you rest or roam. Ideal for home, office or SUV, they keep your firearms, electronics and accessories out of the hands of unauthorized users yet conveniently within reach with a three- to eight-digit code you program yourself.

*Available in three sizes*

### ROOM FOR YOUR TREASURES

Slide-out drawer accommodates firearms, jewelry, documents and more.

### DUAL ENTRY METHODS

Digital lock with key backup provides convenient access to your valuables.

### CLOSED TO INTRUDERS

Pry-resistant door keeps children and unauthorized users from gaining access.

### TOUGH EXTERIOR

Constructed of heavy-duty steel, with pre-drilled holes for permanent installation.

### SECURITY CABLE

Robust 5-foot cable provides added security when anchored to a stationery object.

### UNDER BED SAFE - MEDIUM

**No. 75402**

26"W x 5"H x 20"D

Weight: 55 lbs.

### UNDER BED SAFE - LARGE

**No. 75401**

40"W x 6"H x 22"D

Weight: 105 lbs.

### UNDER BED SAFE - XXL

**No. 75400**

48"W x 7"H x 24"D

Weight: 150 lbs.



**\*IMPORTANT:** Do not store loaded firearms in any safe or lock box. Follow local, state and federal laws for firearm storage and transport. Check TSA regulations and airline policies before traveling with any portable safe. Check dimensions of your firearm against safe's internal dimensions. Firearm and firearm accessories not included.





# CLEANING & ACCESSORIES

## HORNADY® HOT TUB® SONIC CLEANER

The Hornady® Hot Tub® takes sonic cleaning to a whole new level. Featuring a 9 liter capacity, the Hot Tub® is long enough to accommodate and clean a 16 inch AR-15 upper. In addition to having 4 transducers, there is also a heating element that enhances cleaning action, which is especially useful when cleaning gun parts. Combined with One Shot® Sonic Clean™ solution, the microjet action removes carbon residue and other debris.

Unlike traditional tumblers, sonic cleaners clean internal and external surfaces of cartridge cases and primer pockets. One 1.7 quart inner tank comes with the unit and can be used in the main tank for cleaning multiple smaller parts or to use separate solutions at the same time. Hanging cords have been integrated into the design to allow large objects to take full advantage of the ultrasonic energy. Additionally, the Hot Tub® features integrated drain pans in the lids, a small parts basket, a de-gas function and 5 temperature settings from 100-140°F.



### One Shot® Sonic Clean™ Gun Parts Formula

Cleans all gun parts and is safe for all firearms finishes. Quickly removes carbon, dirt, grease and powder residue. Designed specifically for the Hornady® Lock-N-Load® Sonic Cleaners.

**32 fl oz. No. 043360**

### Hot Tub® main tank dimensions:

25.5"W x 7.0"H x 4.1"D  
(9 Liters / 2.3 Gallons)

**110 volt No. 043310**

### Internal divider tank dimensions:

6.7"W x 4.7"H x 3.2"D  
(1.6 Liters / 1.7 Quarts)



### One Shot® Gun Cleaner and Lube

Hornady® One Shot® with DynaGlide Plus® is a revolutionary formula developed to prevent firearm malfunctions caused by a buildup of lubricants and grime.

**5 oz. Aerosol No. 9990**  
**10 oz. Aerosol No. 99901**

**Outperforms 40 other brands for corrosion and rust prevention!**  
*Test results at [Hornady.com](http://Hornady.com)*



### Hornady® Cheek Pad

Black (Right Hand) ..... **No. 99108**  
Black (Left Hand)..... **No. 99113**  
Tan (Right Hand)..... **No. 99110**



### Hornady® Range Bag

This durable nylon range bag has large compartments for the range shooter or uniformed officer. With embroidered Team Hornady® logos, this range bag can carry a variety of accessories. Imported.

**No. 9919**

# TEST BARREL BALLISTICS

All rifle data shot from a 24" Bbl, unless otherwise noted.

## CRITICAL DUTY®

Ammo Description				Velocity (fps)			Energy (ft/lb)		
CARTRIDGE	BULLET	ITEM #	BARREL LENGTH	MUZZLE	50 yds	100 yds	MUZZLE	50 yds	100 yds
9mm Luger + P	124 gr. FlexLock®	90215	4.0"	1175	1081	1012	380	322	282
9mm Luger	135 gr. FlexLock®	90235	4.0"	1010	960	918	306	276	253
9mm Luger + P	135 gr. FlexLock®	90225	4.0"	1070	1008	958	343	304	275
357 Sig	135 gr. FlexLock®	91295	4.0"	1225	1102	1016	450	364	309
357 Magnum	135 gr. FlexLock®	90515	8.0"	1275	1150	1059	487	396	336
40 S&W	175 gr. FlexLock®	91375	4.0"	1010	948	899	396	350	314
10mm Auto	175 gr. FlexLock®	91255	5.0"	1150	1052	981	523	437	381
45 Auto + P	220 gr. FlexLock®	90925	5.0"	975	927	887	464	420	384

## CRITICAL DEFENSE®

Ammo Description				Velocity (fps)			Energy (ft/lb)		
CARTRIDGE	BULLET	ITEM #	BARREL LENGTH	MUZZLE	50 yds	100 yds	MUZZLE	50 yds	100 yds
380 Auto	90 gr. FTX®	90080	4.0"	1000	912	845	200	166	143
9x 18mm Makarov	95 gr. FTX®	91000	4.0"	1000	913	846	211	176	151
9mm Luger	100 gr. FTX® Lite	90240	4.0"	1125	1003	922	281	224	189
9mm Luger	115 gr. FTX®	90250	4.0"	1135	1025	949	329	268	230
38 Special	90 gr. FTX® Lite	90300	4.0"	1080	962	881	350	277	233
38 Special	110 gr. FTX®	90310	4.0"	1010	939	882	249	215	190
38 Special + P	110 gr. FTX®	90311	4.0"	1090	996	928	290	242	210
357 Magnum	125 gr. FTX®	90500	8.0"	1500	1312	1163	624	478	376
40 S&W	165 gr. FTX®	91340	4.0"	1170	1059	981	502	411	353
44 Special	165 gr. FTX®	90700	7½"	1160	1038	956	493	395	335
45 Auto	185 gr. FTX®	90900	5.0"	1000	935	883	411	359	320
45 Colt	185 gr. FTX®	92790	7¼"	1160	1049	972	553	452	388

## 223 REM

Ammo Description			Velocity (fps)							Energy (ft/lb)					Trajectory Tables (inches)					
	BULLET	ITEM #	MUZ	100 yd	200 yd	300 yd	400 yd	500 yd	MUZ	100 yd	200 yd	300 yd	400 yd	500 yd	MUZ	100 yd	200 yd	300 yd	400 yd	500 yd
223 Rem	53 gr. TAP Patrol®	80295	3335	2757	2248	1797	1418	1141	1309	895	595	380	237	153	-1.5	0.0	-3.1	-13.3	-34.4	-73.1
223 Rem	55 gr. TAP Urban®	83276	3220	2837	2485	2159	1859	1589	1266	983	754	569	422	308	-1.5	0.0	-2.9	-11.4	-27.5	-53.7
223 Rem	60 gr. TAP Urban®	83286	3110	2749	2417	2108	1823	1567	1289	1007	778	592	443	327	-1.5	0.0	-3.1	-12.3	-29.3	-56.8
223 Rem	62 gr. TAP® Barrier™	83285	3050	2699	2375	2073	1796	1546	1239	971	751	573	430	319	-1.5	0.0	-3.3	-12.8	-30.5	-59.0
223 Rem	75 gr. BTHPTAP®	80265	2785	2557	2340	2134	1939	1755	1292	1089	912	759	626	513	-1.5	0.0	-3.8	-14.1	-31.9	-59.1

## 5.56 NATO

Ammo Description			Velocity (fps)							Energy (ft/lb)					Trajectory Tables (inches)					
	BULLET	ITEM #	MUZ	100 yd	200 yd	300 yd	400 yd	500 yd	MUZ	100 yd	200 yd	300 yd	400 yd	500 yd	MUZ	100 yd	200 yd	300 yd	400 yd	500 yd
5.56 NATO	53 gr. TAP Patrol® (20" Bbl)	81275	3310	2736	2229	1781	1404	1133	1289	881	585	373	232	151	-1.5	0.0	-3.2	-13.6	-35.1	-74.5
5.56 NATO	62 gr. TAP® Barrier™ (20" Bbl)	8125C	3085	2725	2393	2085	1801	1546	1310	1022	788	598	446	329	-1.5	0.0	-3.2	-12.6	-30.0	-58.2
5.56 NATO	70 gr. CX™ TAP® Barrier™ (20" Bbl)	81265	2900	2637	2389	2154	1934	1728	1307	1081	887	721	581	464	-1.5	0	-3.5	-13.1	-30.3	-56.8
5.56 NATO	75 gr. BTHPT2 TAP® (20" Bbl)	8126N	2885	2626	2382	2151	1934	1731	1386	1149	945	771	623	499	-1.5	0.0	-3.6	-13.3	-30.5	-57.1
5.56 NATO	75 gr. TAP® SBR (11.5 Bbl)	81295	2310	1965	1654	1388	1179	1042	889	643	456	321	231	181	-1.5	0	-7.6	-28.0	-66.7	-130.3

## 300 BLACKOUT

Ammo Description			Velocity (fps)							Energy (ft/lb)					Trajectory Tables (inches)					
	BULLET	ITEM #	MUZ	100 yd	200 yd	300 yd	400 yd	500 yd	MUZ	100 yd	200 yd	300 yd	400 yd	500 yd	MUZ	100 yd	200 yd	300 yd	400 yd	500 yd
300 Blackout	110 gr. TAP Urban® (16 Bbl)	80885	2370	2089	1830	1594	1386	1215	1372	1066	818	620	469	361	-1.5	0.0	-6.5	-23.5	-54.2	-103.2
300 Blackout	111gr. Monoflex® TAP® SBR® (16" Bbl)	80865	2135	1714	1365	1117	977	887	1123	724	459	307	235	194	-1.5	0.0	-10.5	-40.0	-97.2	-190.8
300 Blackout	190 gr. Sub-X™ TAP® (16" Bbl)	80895	1050	998	955	918	885	856	465	420	384	355	331	309	-1.5	0	-33.4	-104.9	-217.7	-375.1

## 6MM ARC

Ammo Description			Velocity (fps)							Energy (ft/lb)					Trajectory Tables (inches)					
	BULLET	ITEM #	MUZ	100 yd	200 yd	300 yd	400 yd	500 yd	MUZ	100 yd	200 yd	300 yd	400 yd	500 yd	MUZ	100 yd	200 yd	300 yd	400 yd	500 yd
6mm ARC	106 gr. TAP® (18" Bbl)	81605	2610	2459	2314	2173	2038	1907	1603	1424	1260	1112	977	856	-1.5	0	-4.3	-15.0	-33.2	-59.7



# TEST BARREL BALLISTICS

All rifle data shot from a 24" Bbl, unless otherwise noted.

## 6.5 CREEDMOOR

Ammo Description			Velocity (fps)							Energy (ft/lb)					Trajectory Tables (inches)					
	BULLET	ITEM #	MUZ	100 yd	200 yd	300 yd	400 yd	500 yd	MUZ	100 yd	200 yd	300 yd	400 yd	500 yd	MUZ	100 yd	200 yd	300 yd	400 yd	500 yd
6.5 Creedmoor	140 gr. CX™ TAP® Heavy Barrier™	81485	2675	2425	2188	1965	1757	1566	2224	1827	1488	1200	959	762	-1.5	0	-4.4	-16.2	-37.0	-69.1
6.5 Creedmoor	147 gr. ELD® Match TAP Precision®	81505	2695	2567	2443	2323	2206	2092	2370	2151	1948	1761	1587	1428	-1.5	0	-3.8	-13.4	-29.5	-52.7

## 308 WIN

Ammo Description			Velocity (fps)							Energy (ft/lb)					Trajectory Tables (inches)					
	BULLET	ITEM #	MUZ	100 yd	200 yd	300 yd	400 yd	500 yd	MUZ	100 yd	200 yd	300 yd	400 yd	500 yd	MUZ	100 yd	200 yd	300 yd	400 yd	500 yd
308 Win	110 gr. TAP Urban®	80896	3160	2826	2516	2226	1956	1707	2439	1950	1546	1210	934	712	-1.5	0	-2.9	-11.3	-26.8	-51.4
308 Win	155 gr. ELD® Match TAP Precision®	80905	2785	2589	2401	2222	2050	1886	2669	2307	1985	1699	1446	1224	-1.5	0	-3.7	-13.4	-30.2	-55.4
308 Win	165 gr. CX™ TAP® Heavy Barrier	80985	2610	2413	2224	2044	1872	1711	2496	2132	1812	1530	1284	1072	-1.5	0	-4.5	-16.0	-35.9	-65.8
308 Win	168 gr. A-Max™ TAP Precision®	80965	2680	2494	2316	2145	1981	1825	2679	2320	2000	1715	1464	1242	-1.5	0	-4.1	-14.7	-32.9	-59.9
308 Win	168 gr. ELD® Match TAP Precision®	80725	2710	2540	2376	2218	2066	1920	2739	2406	2105	1835	1592	1375	-1.5	0	-3.9	-14.0	-31.1	-56.4
308 Win	168 gr. ELD® Match TAP AR™	80715	2670	2501	2339	2182	2031	1887	2659	2333	2040	1776	1539	1329	-1.5	0	-4.1	-14.5	-32.3	-58.5

## 300 WIN MAG

Ammo Description			Velocity (fps)							Energy (ft/lb)					Trajectory Tables (inches)					
	BULLET	ITEM #	MUZ	100 yd	200 yd	300 yd	400 yd	500 yd	MUZ	100 yd	200 yd	300 yd	400 yd	500 yd	MUZ	100 yd	200 yd	300 yd	400 yd	500 yd
300 Win Mag	178 gr. ELD® Match TAP Precision®	82045	2960	2788	2622	2462	2308	2159	3463	3071	2717	2396	2106	1843	-1.5	0	-3.0	-11.0	-24.8	-45.2

## 300 PRC

Ammo Description			Velocity (fps)							Energy (ft/lb)					Trajectory Tables (inches)					
	BULLET	ITEM #	MUZ	100 yd	200 yd	300 yd	400 yd	500 yd	MUZ	100 yd	200 yd	300 yd	400 yd	500 yd	MUZ	100 yd	200 yd	300 yd	400 yd	500 yd
300 PRC	225 gr. ELD® Match TAP Precision®	81215	2810	2692	2577	2465	2356	2250	3945	3620	3318	3036	2773	2529	-1.5	0.0	-3.3	-11.9	-26.1	-46.7

## RIFLE

Ammo Description			Velocity (fps)							Energy (ft/lb)					Trajectory Tables (inches)					
	BULLET	ITEM #	MUZ	100 yd	200 yd	300 yd	400 yd	500 yd	MUZ	100 yd	200 yd	300 yd	400 yd	500 yd	MUZ	100 yd	200 yd	300 yd	400 yd	500 yd
338 Lapua Mag	250 gr. BTHP® (24" Bbl)	8230	2850	2712	2579	2449	2323	2201	4509	4083	3391	3330	2996	2689	-1.5	0	-3.2	-11.7	-26.0	-46.7
338 Lapua	285 gr. ELD® Match (24" Bbl)	82300	2745	2630	2519	2410	2304	2200	4768	4378	4015	3676	3359	3064	-1.5	0	-1.8	-7.2	-20.5	-40.3
50 BMG	750 gr. A-Max® (36" Bbl)	8270	2810	2722	2637	2552	2470	2389	13149	12342	11576	10849	10158	9502	1.5	0.0	-3.2	-11.4	-24.9	-44.2

## TRAINING™ - HANDGUN

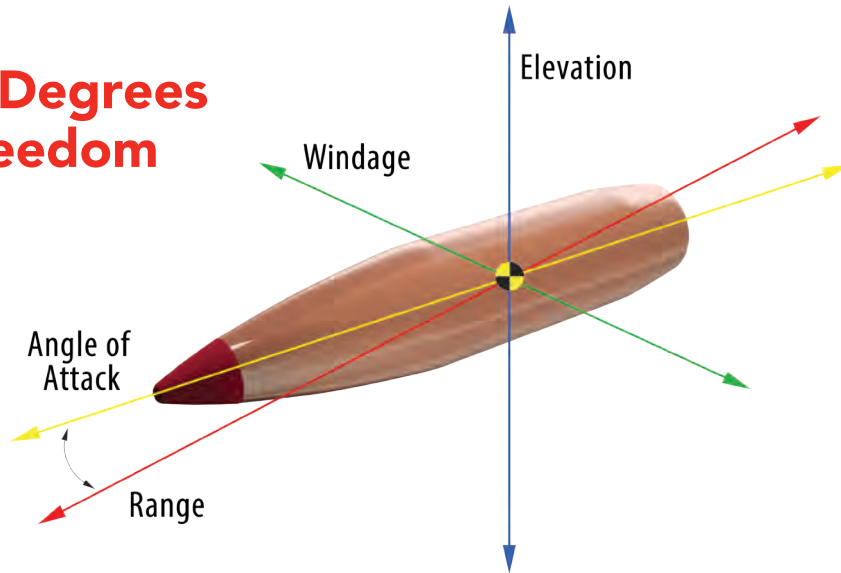
Ammo Description				Velocity (fps)			Energy (ft/lb)		
CARTRIDGE	BULLET	ITEM #	BARREL LENGTH	MUZZLE	50 yd	100 yd	MUZZLE	50 yd	100 yd
9mm Luger	115 gr. FMJ Training	90269	4"	1135	1032	959	329	272	235
9mm Luger	135 gr. FMJ Training	90238	4"	1010	960	918	306	276	253
357 Sig	135 gr. FMJ Training	91298	5"	1210	1091	1008	439	357	305
40 S&W	175 gr. FMJ Training	91374	4"	1010	948	899	396	350	314
45 Auto	220 gr. FMJ Training	90924	4"	900	863	829	396	363	336
9mm Luger	90 gr. Frangible Training	90230	4"	1300	1124	1011	338	253	204
357 Sig	90 gr. Frangible Training	91285	4"	1440	1209	1056	414	292	223
40 S&W	125 gr. Frangible Training	91319	4"	1210	1069	977	406	317	265
45 Auto	145 gr. Frangible Training	90931	5"	1130	974	878	411	305	248

## TRAINING™ - RIFLE

Ammo Description			Velocity (fps)			Energy (ft/lb)			Trajectory Tables (inches)		
	BULLET	ITEM #	MUZ	100 yd	200 yd	MUZ	100 yd	200 yd	MUZ	100 yd	200 yd
223 Rem	55 gr. SP Training	80255	3240	2823	2443	1282	973	728	-1.5	0	-2.9
223 Rem	55 gr. FMJ-BT Training	80275	3240	2836	2467	1282	982	743	-1.5	0	-2.9
223 Rem	55 gr. FMJ Training	80271	3240	2837	2468	1282	983	744	-1.5	1.4	0
5.56 NATO	45 gr. Frangible Training (20" Bbl)	81251	3050	2237	1571	929	500	247	-1.5	0.0	-5.8
5.56 NATO	55 gr. FMJ Training (20" Bbl)	81278	3240	2837	2468	1282	983	744	-1.5	1.4	0
5.56 NATO	75 gr. TAP SBR® Training (20" Bbl)	81292	2310	2105	1911	888	738	608	-1.5	0	-6.4
300 Blackout	110 gr. NTX® Training (16" Bbl)	80864	2080	1726	1422	1057	728	494	-1.5	0.0	-10.3
300 Blackout	110 gr. Frangible Training (16" Bbl)	80870	2375	2094	1834	1378	1071	623	-1.5	3.2	0

# An explanation of the Hornady® 4DOF® Ballistic Calculator:

## Four Degrees of Freedom



**Why compare the flight of your bullet to a standard G1 or G7 projectile when you can use your own projectile as the standard?**

Most ballistic calculators consider three degrees of freedom: windage, elevation, and range. The Hornady® Ballistic Calculator with 4DOF® (Four Degrees of Freedom) also incorporates the projectile's movement about its center of gravity and angle relative to line of flight.

Its trajectory solutions are based on projectile drag coefficient (not ballistic coefficient), along with exact physical modeling of the projectile, its mass and aerodynamic properties. It also correctly calculates aerodynamic jump, a bullet's vertical shift as it encounters a crosswind.

Using Doppler radar, Hornady engineers calculated exact drag versus velocity curves for each bullet in the database, making the 4DOF® calculator more accurate at longer ranges than BC-based systems or custom drag curves with limited data.

**New in-app features give shooters the edge.**

### GROUP ANALYSIS:

Allows users to capture group analytics such as raw group size, group size in MOA, mean radius, and group mean point of impact distance from point of aim. Analyzed targets can be saved, shared, and used to set rifle zero angle.

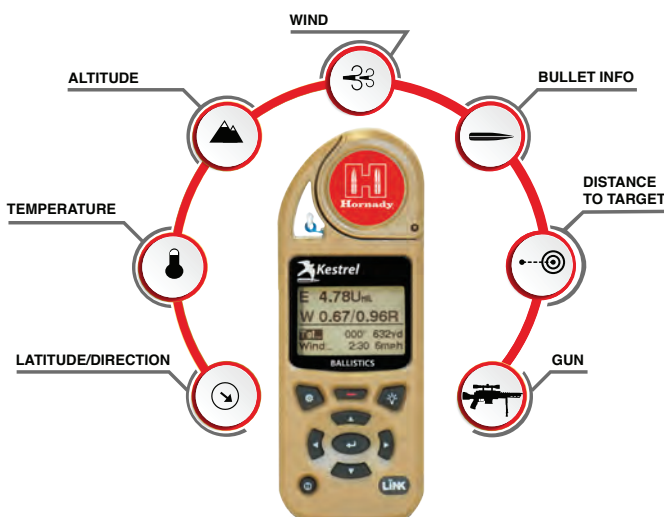
### SHARE PROFILE

This feature lets the user share their exact favorite profile with another 4DoF user.

### RANGE CARD:

Lets the user input target and environmental data for an infinite number of targets and then allows the shooter to view trajectory solutions quickly for each.

**Find the free Hornady® Ballistic Calculator with 4DOF® at [hornady.com/4DOF](http://hornady.com/4DOF) or download from the Apple or Android app stores.**



## KESTREL® 5700 BALLISTICS WEATHER METER WITH HORNADY® 4DOF®

The Kestrel with Hornady 4DOF® is a comprehensive, weather-proof ballistics meter built for unprecedented accuracy and uncompromising performance even in harsh environments.

### EXTREMELY RUGGED AND DURABLE

Kestrel meters are waterproof, dust proof and drop-tested to military standards.

### EASY OPERATION FOR OUTDOOR USE

Large buttons make it easy to navigate screens and input information even with gloves. The bright, clear backlit display is readable in direct sunlight or low light situations.

### LONG-LASTING POWER

Powered by one AA lithium battery, expect hundreds of hours of use for a reliable tool that won't quit when you need it most.

For more information and to purchase, go to [hornadykestrel.com](http://hornadykestrel.com)





PO Box 1848  
Grand Island, NE 68802  
1-308-382-1390  
Fax: 308-382-5761  
www.hornadyLE.com

# FREE HORNADY® BALLISTIC APP WITH 4DOF®

DOWNLOAD TODAY  
FOR YOUR MOBILE DEVICE



SCAN TO  
LEARN MORE